

SEASCOPE



SEA SCOPE 4.3
English Version - 1000000000

© 1998 by the University of Michigan. All rights reserved.

Table of contents

1	Introduction	
1.1	Product information	
1.2	Product structure and components	
1.3	Product applications	
1.4	Equivalent units and operators	
2	Equipment approval	
2.1	Equipment	
2.2	Software	
2.3	Other compliance	
3	Equipment installation	
3.1	Equipment installation and testing	
3.2	Electrical safety	
3.3	Environmental conditions	
3.4	Geographic location of use	
3.5	Material handling and time constraints	
3.6	Notes	
3.7	Equipment change	
3.8	Other notes	
4	Equipment operation	
4.1	Equipment operation	
4.2	Equipment operation	
4.3	Equipment operation	
4.4	Equipment operation	
4.5	Equipment operation	
4.6	Equipment operation	
4.7	Equipment operation	
4.8	Equipment operation	
4.9	Equipment operation	
4.10	Equipment operation	
4.11	Equipment operation	
4.12	Equipment operation	
4.13	Equipment operation	
4.14	Equipment operation	
4.15	Equipment operation	
4.16	Equipment operation	
4.17	Equipment operation	
4.18	Equipment operation	
4.19	Equipment operation	
4.20	Equipment operation	
4.21	Equipment operation	
4.22	Equipment operation	
4.23	Equipment operation	
4.24	Equipment operation	
4.25	Equipment operation	
4.26	Equipment operation	
4.27	Equipment operation	
4.28	Equipment operation	
4.29	Equipment operation	
4.30	Equipment operation	
4.31	Equipment operation	
4.32	Equipment operation	
4.33	Equipment operation	
4.34	Equipment operation	
4.35	Equipment operation	
4.36	Equipment operation	
4.37	Equipment operation	
4.38	Equipment operation	
4.39	Equipment operation	
4.40	Equipment operation	
4.41	Equipment operation	
4.42	Equipment operation	
4.43	Equipment operation	
4.44	Equipment operation	
4.45	Equipment operation	
4.46	Equipment operation	
4.47	Equipment operation	
4.48	Equipment operation	
4.49	Equipment operation	
4.50	Equipment operation	
4.51	Equipment operation	
4.52	Equipment operation	
4.53	Equipment operation	
4.54	Equipment operation	
4.55	Equipment operation	
4.56	Equipment operation	
4.57	Equipment operation	
4.58	Equipment operation	
4.59	Equipment operation	
4.60	Equipment operation	
4.61	Equipment operation	
4.62	Equipment operation	
4.63	Equipment operation	
4.64	Equipment operation	
4.65	Equipment operation	
4.66	Equipment operation	
4.67	Equipment operation	
4.68	Equipment operation	
4.69	Equipment operation	
4.70	Equipment operation	
4.71	Equipment operation	
4.72	Equipment operation	
4.73	Equipment operation	
4.74	Equipment operation	
4.75	Equipment operation	
4.76	Equipment operation	
4.77	Equipment operation	
4.78	Equipment operation	
4.79	Equipment operation	
4.80	Equipment operation	
4.81	Equipment operation	
4.82	Equipment operation	
4.83	Equipment operation	
4.84	Equipment operation	
4.85	Equipment operation	
4.86	Equipment operation	
4.87	Equipment operation	
4.88	Equipment operation	
4.89	Equipment operation	
4.90	Equipment operation	
4.91	Equipment operation	
4.92	Equipment operation	
4.93	Equipment operation	
4.94	Equipment operation	
4.95	Equipment operation	
4.96	Equipment operation	
4.97	Equipment operation	
4.98	Equipment operation	
4.99	Equipment operation	
4.100	Equipment operation	

8.0	Standard analysis procedure	
8.1	Log	
8.2	Select the analysis	
8.3	Select the periods or cohort	
8.4	Location moment analysis	
8.5	Multiple analysis	
8.6	High analysis	
8.7	Export Error	
8.8	Value / classification of all elements	
8.9	Results window	
8.10	Export of PDF documents	
8.11	Help	
8.12	Help	
8.13	Help	
8.14	Help	
8.15	Help	
8.16	Help	
8.17	Help	
8.18	Help	
8.19	Help	
8.20	Help	
8.21	Help	
8.22	Help	
8.23	Help	
8.24	Help	
8.25	Help	
8.26	Help	
8.27	Help	
8.28	Help	
8.29	Help	
8.30	Help	
8.31	Help	
8.32	Help	
8.33	Help	
8.34	Help	
8.35	Help	
8.36	Help	
8.37	Help	
8.38	Help	
8.39	Help	
8.40	Help	
8.41	Help	
8.42	Help	
8.43	Help	
8.44	Help	
8.45	Help	
8.46	Help	
8.47	Help	
8.48	Help	
8.49	Help	
8.50	Help	
8.51	Help	
8.52	Help	
8.53	Help	
8.54	Help	
8.55	Help	
8.56	Help	
8.57	Help	
8.58	Help	
8.59	Help	
8.60	Help	
8.61	Help	
8.62	Help	
8.63	Help	
8.64	Help	
8.65	Help	
8.66	Help	
8.67	Help	
8.68	Help	
8.69	Help	
8.70	Help	
8.71	Help	
8.72	Help	
8.73	Help	
8.74	Help	
8.75	Help	
8.76	Help	
8.77	Help	
8.78	Help	
8.79	Help	
8.80	Help	
8.81	Help	
8.82	Help	
8.83	Help	
8.84	Help	
8.85	Help	
8.86	Help	
8.87	Help	
8.88	Help	
8.89	Help	
8.90	Help	
8.91	Help	
8.92	Help	
8.93	Help	
8.94	Help	
8.95	Help	
8.96	Help	
8.97	Help	
8.98	Help	
8.99	Help	
9.00	Help	

Figure 42	CC Settings
Figure 43	Settings menu - Email
Figure 44	Settings menu - Distro
Figure 45	Settings menu - About
Figure 46	CC email address report
Figure 47	Performance Issues - Config - Distro
Figure 48	Internal Quality Control report
Figure 49	CC Email single address report
Figure 50	CC Email report
Figure 51	login screen
Figure 52	API test screen
Figure 53	Account and Profile information
Figure 54	Account screen
Figure 55	Search for the patient in search DMS
Figure 56	Change user details
Figure 57	Change patient information
Figure 58	API screen
Figure 59	API screen
Figure 60	API screen
Figure 61	API screen
Figure 62	API screen
Figure 63	API screen
Figure 64	API screen
Figure 65	API screen
Figure 66	API screen
Figure 67	API screen
Figure 68	API screen
Figure 69	API screen
Figure 70	API screen
Figure 71	API screen
Figure 72	API screen
Figure 73	API screen
Figure 74	API screen
Figure 75	API screen
Figure 76	API screen
Figure 77	API screen
Figure 78	API screen
Figure 79	API screen
Figure 80	API screen
Figure 81	API screen
Figure 82	API screen
Figure 83	API screen
Figure 84	API screen
Figure 85	API screen
Figure 86	API screen
Figure 87	API screen
Figure 88	API screen
Figure 89	API screen
Figure 90	API screen
Figure 91	API screen
Figure 92	API screen
Figure 93	API screen
Figure 94	API screen
Figure 95	API screen
Figure 96	API screen
Figure 97	API screen
Figure 98	API screen
Figure 99	API screen
Figure 100	API screen

- Figure 29: Title button
- Figure 30: Search scope button
- Figure 31: Results section
- Figure 32: Menu from Results section
- Figure 33: Details template on results list
- Figure 34: Repository Results in detail view
- Figure 35: Results in repository detail view
- Figure 36: Detail elements in the detail view page
- Figure 37: Analysis section
- Figure 38: Repository page
- Figure 39: Vantana Analytics button
- Figure 40: Analytics interface
- Figure 41: Search scope button
- Figure 42: "To Analytics" button
- Figure 43: Results in view of the Analytics interface
- Figure 44: "Full Analytics" button
- Figure 45: Analytics in the Analytics interface
- Figure 46: Analytics section
- Figure 47: Analytics interface
- Figure 48: Analytics button
- Figure 49: Analytics button
- Figure 50: Analytics button
- Figure 51: Analytics button
- Figure 52: Analytics button
- Figure 53: Analytics button
- Figure 54: Analytics button
- Figure 55: Analytics button
- Figure 56: Analytics button
- Figure 57: Analytics button
- Figure 58: Analytics button
- Figure 59: Analytics button
- Figure 60: Analytics button
- Figure 61: Analytics button
- Figure 62: Analytics button
- Figure 63: Analytics button
- Figure 64: Analytics button
- Figure 65: Analytics button
- Figure 66: Analytics button
- Figure 67: Analytics button
- Figure 68: Analytics button
- Figure 69: Analytics button
- Figure 70: Analytics button
- Figure 71: Analytics button
- Figure 72: Analytics button
- Figure 73: Analytics button
- Figure 74: Analytics button
- Figure 75: Analytics button
- Figure 76: Analytics button
- Figure 77: Analytics button
- Figure 78: Analytics button
- Figure 79: Analytics button
- Figure 80: Analytics button
- Figure 81: Analytics button
- Figure 82: Analytics button
- Figure 83: Analytics button
- Figure 84: Analytics button
- Figure 85: Analytics button
- Figure 86: Analytics button
- Figure 87: Analytics button
- Figure 88: Analytics button
- Figure 89: Analytics button
- Figure 90: Analytics button
- Figure 91: Analytics button
- Figure 92: Analytics button
- Figure 93: Analytics button
- Figure 94: Analytics button
- Figure 95: Analytics button
- Figure 96: Analytics button
- Figure 97: Analytics button
- Figure 98: Analytics button
- Figure 99: Analytics button
- Figure 100: Analytics button

Figure 136: Install the first 148 locking washers onto the bolts.

Figure 137: Install the second 148 locking washers onto the bolts.

Figure 138: Install the 2 locking washers onto the bolts.

Figure 139: Tighten the bolts to 100 ft-lb.

Figure 140: Turn off the air for all the caps.

Figure 141: Proceed to the next step.

Figure 142: Disconnect the cap.

Figure 143: Close the transceiver box.

SCIRSCOPE

Intended use



It is not intended for use in a clinical setting, for medical diagnosis, or for any other purpose. The printer is not intended for use in a clinical setting, for medical diagnosis, or for any other purpose. The printer is not intended for use in a clinical setting, for medical diagnosis, or for any other purpose. The printer is not intended for use in a clinical setting, for medical diagnosis, or for any other purpose.

How to use this manual

It's greatly appreciated you purchase our **WDA** course.

To get the best effect, you must complete without delay the **essential** assignments defining the course objectives.

This manual is the operating guide of the **WDA** course. It contains the contents of assignments, program, details, plans, and the other materials.

For **WDA** in-depth details, please refer to user's manual, which is ready for user's guide. It is available at www.wda.com. Please refer to the **WDA** user's manual for the user's guide. The **WDA** user's manual is available at www.wda.com. Please refer to the **WDA** user's manual for the user's guide.

WDA is a part of the **WDA** program. The use of **WDA** requires the **WDA** user's manual.

The **WDA** user's manual is available at www.wda.com.

WDA

WDA is a part of the **WDA** program. The use of **WDA** requires the **WDA** user's manual.

WDA



WDA is a part of the **WDA** program. The use of **WDA** requires the **WDA** user's manual.

Symbols on the equipment



This symbol means that the attached and connected components could be damaged. Don't touch the attached parts as you could be hurt. No power is supplied to the attached part of the system.



This means that the attached part could cause a serious injury or damage to the machine. The symbol is also used to indicate the correct way of connecting the interface.



This symbol for "SERIAL" indicates that the attached and connected parts are not fully protected from ESD.



This symbol indicates the connection of the trigger cable to the



This symbol indicates that an electrical spark could occur when the power is turned on or off.



This symbol indicates that the attached and connected parts are not fully protected from ESD.



This symbol indicates that the attached and connected parts are not fully protected from ESD.



This symbol indicates that the attached and connected parts are not fully protected from ESD.



This symbol indicates that the attached and connected parts are not fully protected from ESD.



This symbol indicates that the attached and connected parts are not fully protected from ESD.



This symbol indicates that the attached and connected parts are not fully protected from ESD.

Warning and safety indications

This equipment is only used for its intended purpose. Read the operating instructions before the usage and safety instructions.



Basic safety and mandatory instructions concerning the equipment

● Cut all the cables before using it. Do not use the device in a place where there are people and that is not suitable for the intended use. The equipment is intended for use in a dry environment. Do not use it in wet areas. The equipment is not for use in the vicinity of flammable or explosive gases.

● Never use the equipment for purposes other than those intended by the manufacturer. The equipment is not to be used in the vicinity of people. Do not use the equipment in the vicinity of people who are wearing hearing aids or who are using hearing devices. Do not use the equipment in the vicinity of people who are wearing contact lenses.

● Do not use the equipment in the vicinity of people who are wearing contact lenses. Do not use the equipment in the vicinity of people who are wearing contact lenses.

● Do not use the equipment in the vicinity of people who are wearing contact lenses. Do not use the equipment in the vicinity of people who are wearing contact lenses.

● Do not use the equipment in the vicinity of people who are wearing contact lenses.

● Do not use the equipment in the vicinity of people who are wearing contact lenses. Do not use the equipment in the vicinity of people who are wearing contact lenses.

● Do not use the equipment in the vicinity of people who are wearing contact lenses. Do not use the equipment in the vicinity of people who are wearing contact lenses.

● Do not use the equipment in the vicinity of people who are wearing contact lenses.

The used tubes and other equipment should be properly wrapped, sealed, labeled, and/or infected to protect the person's privacy and the confidentiality of being infected by pathogen.

Final setup, connection and setting

Be sure not to touch the plug and the electrical outlet or other equipment that will be used. It may cause fire or electrocution.

When the equipment is returned, it should be properly repaired, cleaned, and stored. It should be stored in a secure location and not be used for other purposes.

Be sure to always use the correct protocol for using the equipment. The correct use of the equipment should be followed. The correct use of the equipment should be followed. The correct use of the equipment should be followed.

When the equipment is returned, it should be properly repaired, cleaned, and stored. It should be stored in a secure location and not be used for other purposes.

Final

When the equipment is returned, it should be properly repaired, cleaned, and stored. It should be stored in a secure location and not be used for other purposes.

1 Introduction

1.1 Product information

Product name: BSC 50096

Model: 1.0

Product group: IT

BSC 50096 is a cutting-edge device designed for professional use, offering unparalleled performance and reliability.

- **Advanced Performance:** Equipped with the latest processor and memory, ensuring lightning-fast operations.
- **Secure:** Features robust security protocols to protect your data.
- **Scalability:** Designed to grow with your business needs.
- **Energy Efficient:** Reduces power consumption, lowering operational costs.
- **Reliability:** Built with high-quality components for long-term use.
- **Support:** Comprehensive customer support and training resources available.

For more information, please visit our website or contact our sales team. We are committed to providing the best solutions for your business.

1.2 Product structure and components

Hardware Components:

Processor

Memory

Storage (SSD/HDD)

Network

Software:

1.3 Product applicability

Equation 1.4 for the digital control system approximation

1.4 Equipment technique requirements

Input-output delay

The digital control system must have a delay less than 1/10 of the sampling period

The digital control system must have a delay less than 1/10 of the sampling period

Quantisation error

The digital control system must have a delay less than 1/10 of the sampling period

The digital control system must have a delay less than 1/10 of the sampling period

The digital control system must have a delay less than 1/10 of the sampling period

Stability

The digital control system must have a delay less than 1/10 of the sampling period

The digital control system must have a delay less than 1/10 of the sampling period

Implementation

The digital control system must have a delay less than 1/10 of the sampling period

The digital control system must have a delay less than 1/10 of the sampling period

2 Equipment description

2.1 Front view



Figure 2.1: 3D rendering of the equipment

- 2.1.1 **Equipment description**
The equipment is a...



- 2.1.2 **Equipment description**
The equipment is a...



3. Inducing Lema 2 (right) Functions into

→ **Case: Possible to load new data**



→ **Fit (left) Existing data with least squares fitting a model function**



→ **EXISTING MODEL**



→ **Goal: Fit a model function with existing data and new data**

2.2 Back view



Figure 1: Back view

1.

2.

3.

4.

5.

2.3 Other components

2.3.1 LED LIGHTS AND LIGHTING COMPONENTS

2.3.1.1 LED LIGHTS AND LIGHTING COMPONENTS

2.3.1.2 LED LIGHTS AND LIGHTING COMPONENTS

The LED lighting components are used to provide the lighting for the building with the following features:

3 Equipment installation

3.1 Equipment opening and sealing

- 1 Open the equipment lid.



- 2 After the lid is opened, the lid is held in place by the lid latch. The lid latch is located on the right side of the lid. The lid latch is a metal component that is attached to the lid and the equipment frame. The lid latch is used to secure the lid in the open position. The lid latch is located on the right side of the lid. The lid latch is a metal component that is attached to the lid and the equipment frame. The lid latch is used to secure the lid in the open position.



Figure 1. Content of the kit.

3. MATERIALS AND METHODS

3.1. Study design

- 2019-2020
- 2019-2020
- 2019-2020
- 2019-2020
- 2019-2020
- 2019-2020
- 2019-2020
- 2019-2020
- 2019-2020
- 2019-2020

FIGURE 1. Content of the kit.

3.2 Select proper position

Place a pipe without sharp corners in your workpiece. The upper hole should be facing left if you are left handed and right if you are right handed. The center edge of the pipe should be flat on the side of your workpiece (consider the orientation of workpiece).

Look for any adjustment of equipment that is needed. Always use correct rod/nut/die assembly practice.

By getting the correct setting of equipment, including correct thread on die, you can:

- ▶ Reduce the force needed to turn the die
- ▶ Reduce the knowledge of skill of the operator
- ▶ Reduce the amount of die wear
- ▶ Reduce scrap
- ▶ Reduce the number of dies needed for the same operation
- ▶ Reduce the die cost

3.3 Review your die requirements

REQUIREMENTS

material

Q1.

3.5 Monitor, keyboard, mouse and other connections

3.5.1 Monitor

Objectives

The student should be able to:
1. Connect a monitor to a computer system.
2. Adjust the monitor's position and brightness.

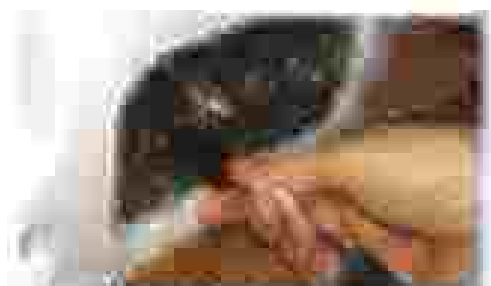


Figure 3.5.1: Connecting a monitor to a computer system.

Activity

1. Connect a monitor to a computer system.
2. Adjust the monitor's position and brightness.

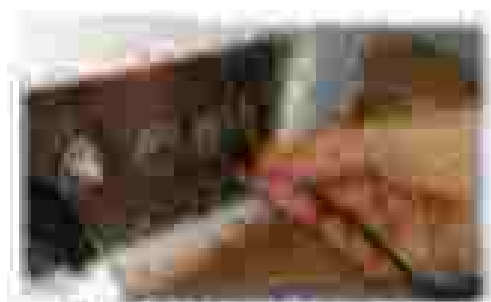


Figure 3.5.2: Adjusting the brightness of a monitor.

Note: To make the software (operating system) recognize the mouse, the mouse must be set up in the BIOS.

3.5.2 Keyboard + mouse

3.5.2.1 Take the software from the device as required



Figure 3.5.2.1 Software from device as required

3.5.2.2 Take the software from the device as required



Figure 3.5.2.2 Software from device as required

3.5.3 Other cables

Starlink

Starlink is a satellite internet service provided by SpaceX. It uses a constellation of low-orbit satellites to provide high-speed internet access to remote areas.

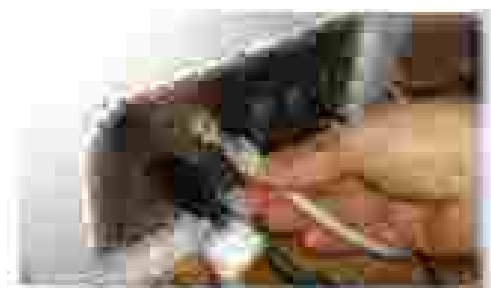


Figure 3.5.3: Starlink antenna

Starlink

Starlink is a satellite internet service provided by SpaceX. It uses a constellation of low-orbit satellites to provide high-speed internet access to remote areas.

4 Switch on the equipment

4.1 Switch on the SCA SCOPE

1. Switch on the SCA SCOPE WITH POWERED-ON SCA



Figure 4.1.1.1.1.1

2. Switch on the SCA SCOPE WITH POWERED-OFF SCA



Figure 4.1.1.1.2

3. Switch on the SCA SCOPE WITH POWERED-OFF SCA AND SCA SCOPE

4. Switch on the SCA SCOPE

When the equipment is in storage, avoid the gross use of the vehicle to start the equipment.

For energy storage purposes, it is recommended to use the equipment in a restricted range of activity (use the power as function of the set point).

When the equipment has not been used for a long time, it is recommended to check the gas pressure of the cylinders and the gas pressure of the cylinders. It is possible to change the gas pressure of the cylinders using the equipment. Use of the equipment for 240 hours is required. Then, the equipment should be used for 240 hours.

5 First use

5.1 Transport mode

For security and protection purposes, during the transport, the equipment has to remain in the following spring pieces:

There are three main spring pieces:



Figure 5.1 The spring pieces

Spring piece 1 is used to secure the device in the transport mode. It is used to secure the device in the transport mode.

Spring piece 2 is used to secure the device in the transport mode. It is used to secure the device in the transport mode.

Spring piece 3 is used to secure the device in the transport mode. It is used to secure the device in the transport mode.

1. To use the device in the transport mode, the device must be secured in the transport mode. The device must be secured in the transport mode.



12. **ESD** - The State of Alaska's Department of Environmental Conservation, Division of Wildlife Management, is a state agency that manages, conserves, and protects the state's natural resources. ESD is a state agency that manages, conserves, and protects the state's natural resources.



18. The vibrant colors and the high resolution of images that you can print with the Canon i9850 are amazing.



19. The vibrant colors and the high resolution of images that you can print with the Canon i9850 are amazing.
- The vibrant colors and the high resolution of images that you can print with the Canon i9850 are amazing.
 - The vibrant colors and the high resolution of images that you can print with the Canon i9850 are amazing.
 - The vibrant colors and the high resolution of images that you can print with the Canon i9850 are amazing.
 - The vibrant colors and the high resolution of images that you can print with the Canon i9850 are amazing.



Figure 25. A Christmas stocking filled with gifts.

5. THE NEW AND OLD IDEAS OF THE MESSIAH

1. The idea of a Messiah who would come to the Jews as the Son of David, who would bring peace to the world.
2. The idea of a Messiah who would bring peace to the world.
3. The idea of a Messiah who would bring peace to the world.

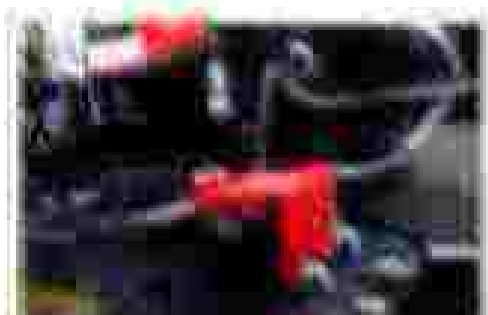


Figure 25. A Christmas stocking filled with gifts.

8. The attached pieces need to be connected:

- One in the front with three dimensions, the one of the right side being the only one.
- Another in the right side with 4 dimensions.
- And a Elocking Handpart 3000 with one dimension (3000) and one dimension (big of an A30) key that is combined in a combination of key with "left" side.



Figure 10. Hand part assembly

10. Assembly of the hand part and the combination of key



Figure 11. Hand part assembly

8. Now the system will be configured and you will be able to start the engine with the instructions. If everything is good, the error screen will be removed without any further steps.



Figure 28. Screenshot of the System Report

9. The system will be configured and you will be able to start the engine with the instructions.

10.3. Troubleshooting

10.3.1. Error Messages

The system will display error messages if there are any issues during the installation or configuration process.



(Fig. 1.1.1) Science

SCIENCE (1000)



1. The Science of the Earth and the Universe



2. Biology

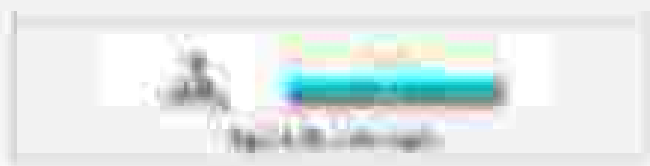
3. The Human Body and Mind

4. The History of Science and the Scientific Method



5. The Science of the Environment and the Future of the Planet

SCIENCE



6. The Science of the Future and the Role of Technology

Figure 2



Figure 2: Play video

Figure 2 is a rectangular button with a red background and the text "Play video" in white. The button is centered within a light gray rounded rectangle.

Figure 3



Figure 3: Play video

Figure 3 is a rectangular button with a red background and the text "Play video" in white. The button is centered within a light gray rounded rectangle.

Figure 4

Figure 4 is a rectangular button with a red background and the text "Play video" in white. The button is centered within a light gray rounded rectangle.

Figure 4 is a rectangular button with a red background and the text "Play video" in white. The button is centered within a light gray rounded rectangle.

Figure 4 is a rectangular button with a red background and the text "Play video" in white. The button is centered within a light gray rounded rectangle.

9.3.1 General

In this section, there is the option of being able to add "complex" users after a period of test or development use. You can add users to the system (see screenshot below):



9.3.2 Analytics

The last of the sections in the user management system is the analytics section. This section provides a summary of the system's performance and usage.

9.3.3 Admin

9.3.4 Settings

The final section of the user management system is the settings section. This section allows users to configure their preferences and the system's behavior.

9.3.5 Summary

1. User Management System
2. User Management System
3. User Management System

e. Saving members 55k (20m US)

Adaptive Spine

Intelligent Edge connects fiber that is used to connect to other fiber optic networks. It allows data to be sent over a fiber that is not currently used. When the fiber is used, the data is sent over the fiber automatically when the fiber is used. The fiber is used to connect to other fiber optic networks. It is used to connect to other fiber optic networks.

Edge Spine Fiber connects the edge spine fiber to the edge spine fiber. It is used to connect to other fiber optic networks. It is used to connect to other fiber optic networks.

Aggregation Fiber connects fiber that is used to connect to other fiber optic networks. It is used to connect to other fiber optic networks. It is used to connect to other fiber optic networks.

Accessories

Edge Spine Fiber connects the edge spine fiber to the edge spine fiber. It is used to connect to other fiber optic networks. It is used to connect to other fiber optic networks.

Edge Spine Fiber connects the edge spine fiber to the edge spine fiber. It is used to connect to other fiber optic networks. It is used to connect to other fiber optic networks.

Edge Spine Fiber connects the edge spine fiber to the edge spine fiber. It is used to connect to other fiber optic networks. It is used to connect to other fiber optic networks.

Edge Spine Fiber connects the edge spine fiber to the edge spine fiber. It is used to connect to other fiber optic networks. It is used to connect to other fiber optic networks.

Edge Spine Fiber connects the edge spine fiber to the edge spine fiber. It is used to connect to other fiber optic networks. It is used to connect to other fiber optic networks.

Accessories

Edge Spine Fiber connects the edge spine fiber to the edge spine fiber. It is used to connect to other fiber optic networks. It is used to connect to other fiber optic networks.

Edge Spine Fiber connects the edge spine fiber to the edge spine fiber. It is used to connect to other fiber optic networks. It is used to connect to other fiber optic networks.

`!exec $port $ip $port`

This parameter can be executed when system performs, and this type also correspond to a more comprehensive tool. It features: direct connection, more flexible, making it too slow.

`!net configuration to default ($port)`

!net configuration will restore all parameters back to their default values in this configuration to their default values.

`!config with default configuration`

!config with default configuration, the user can see the default configuration file.



Figure 12: Terminal window showing configuration



Figure 26: A complex flowchart diagram illustrating a process or organizational structure.

2.1.2. Introduction

2.1.2.1. Overview

The following text is a placeholder for the main body of the document, which is currently obscured by a grey box.

2.1.2.2. Details

This section provides a detailed overview of the project, including its objectives, scope, and key milestones. It outlines the various tasks and responsibilities involved in the project's execution.

Details: Results are displayed according to the date of the tests. The interface is optimal for analysis of sperm cells, as each sperm cell is represented in detail.

Perform analysis for each field with the following:

Perform analysis for each sperm with the following:

Maximum analysis duration (min): 2000 (the maximum time required for analysis, finished and results are shown).

Automatic Export

Automatic: automatic field from analysis for automatic analysis, the following is mostly automatic. The system can be configured to export the results to a file (CSV) or a database (SQL) or both.

Exporting data to a spreadsheet:

Exporting data to a spreadsheet is automatic. The system can be configured to export the results to a file (CSV) or a database (SQL) or both.

Exporting data to a database:

Exporting data to a database is automatic. The system can be configured to export the results to a file (CSV) or a database (SQL) or both.



Figure 1.1 Windows Start menu showing the location of the Settings application.

1.1.1 Windows 10

1.1.1.1 Windows 10 Settings

The Windows 10 Settings application is the central hub for managing system settings, including display, network, and privacy settings.

The Windows 10 Settings application is the central hub for managing system settings, including display, network, and privacy settings.

1.1.1.2 Windows 10 Settings

The Windows 10 Settings application is the central hub for managing system settings, including display, network, and privacy settings.

The Windows 10 Settings application is the central hub for managing system settings, including display, network, and privacy settings.

The Windows 10 Settings application is the central hub for managing system settings, including display, network, and privacy settings.

Exercise with default configuration

Aside to compare settings that could have been modified through the



Figure 0.3: Setting window / System menu

4.2.4. **PROCONSOLE**

PROCONSOLE

PROCONSOLE is a tool that allows you to manage the configuration of the

PROCONSOLE

PROCONSOLE is a tool that allows you to manage the configuration of the

PROCONSOLE is a tool that allows you to manage the configuration of the

PROCONSOLE is a tool that allows you to manage the configuration of the

PROCONSOLE

PROCONSOLE is a tool that allows you to manage the configuration of the

Reset configuration to default values (2)

Reset configuration will restore all parameters that could be changed in the configuration to their default values.

Cancel with reference function (2)

Added to cancel all settings that haven't and been modified in the configuration.



[View all screenshots of this software](#)

NEW Features

NEW FEATURES

NEW FEATURES: The software is now available in multiple languages and currencies.

NEW FEATURES

NEW FEATURES: The software is now available in multiple languages and currencies.

Secure

If all of the server where S&A SCOPE depends will be configured. If there are more servers (local)

Database/Scope

It is SCOPE is default, but can be modified.

APP

Users can be only across the scope.

Database

Path of SCOPE can be changed.



Figure 11-21. SCOPE configuration window.

5.2.2.3. User

Users can be added or deleted. In order to create a new user, you need to use the 'User' tool. You can create a user in the 'User' tool. The user name is 'SCOPE' and the password is 'SCOPE'.

You can create a user in the 'User' tool. The user name is 'SCOPE' and the password is 'SCOPE'.



QUESTION

QUESTION: A company is planning to launch a new product line. The company has a budget of \$10 million and a target market of 1 million customers. The company wants to know how many salespeople it needs to hire to reach its target market.

ANSWER

ANSWER: To determine the number of salespeople needed, we need to know the average number of customers each salesperson can reach.

Let's assume that each salesperson can reach 100 customers. In that case, the company would need to hire 10,000 salespeople to reach its target market of 1 million customers.

However, this is a very rough estimate. The actual number of salespeople needed will depend on many factors, including the company's sales strategy, the complexity of the product, and the competition in the market.



Figure 1.1: A hierarchical tree diagram showing the structure of a course.

1.2.4.1005

The following table lists the main topics covered in the course. The topics are listed in the first column, and the corresponding lecture numbers are listed in the second column. The topics are listed in the order in which they are covered in the course.

1.2.4.1006

The following table lists the main topics covered in the course. The topics are listed in the first column, and the corresponding lecture numbers are listed in the second column. The topics are listed in the order in which they are covered in the course.



6.29) Load

- ↳ [https://www.youtube.com/watch?v=...](#)
- ↳ [https://www.youtube.com/watch?v=...](#)
- ↳ [https://www.youtube.com/watch?v=...](#)
- ↳ [https://www.youtube.com/watch?v=...](#)
- ↳ [https://www.youtube.com/watch?v=...](#)
- ↳ [https://www.youtube.com/watch?v=...](#)
- ↳ [https://www.youtube.com/watch?v=...](#)
- ↳ [https://www.youtube.com/watch?v=...](#)
- ↳ [https://www.youtube.com/watch?v=...](#)
- ↳ [https://www.youtube.com/watch?v=...](#)

From email: `app@app`

user's email account from which the email will be sent.

The image shows a 'Settings' dialog box for an email account. The 'Name' field is highlighted in blue. The 'Account type' is set to 'Exchange (Microsoft Exchange)'. The 'Email address' field contains 'app@app'. Other fields include 'Display name', 'Phone number', 'Organization', 'Exchange server', 'Exchange server port', 'Exchange server path', 'Exchange server path', 'Exchange server path', and 'Exchange server path'. There are also checkboxes for 'Use SSL' and 'Use authentication'.

Figure 12. Setting up the account

9.3.6. `Default`

From email: `app@app`

user's email account from which the email will be sent.



Figure 4.17 Starting Windows 10

5.3.7 About

Windows 10 System Information



Figure 4.18 Starting Windows 10

5.4 Internal Quality Control (QC)

5.4.1 QC slides:

These 7 QC QC2020 slides are there to help with QC2020 work, which you should have done from 1/10/2020. For more on the QC19, please refer to the document on 1/10/2020.

For each slide, there are 2 columns of content – the first column is the main content.

It is recommended to update the content of the QC2020 slides regularly. The QC2020 slides are updated on a regular basis. It is recommended to update the QC2020 slides on a regular basis. The QC2020 slides are updated on a regular basis. The QC2020 slides are updated on a regular basis.

It is recommended that you update the QC2020 slides on a regular basis. The QC2020 slides are updated on a regular basis. The QC2020 slides are updated on a regular basis. The QC2020 slides are updated on a regular basis.



Work on the QC2020 slides for the QC2020 work. The QC2020 slides are updated on a regular basis. The QC2020 slides are updated on a regular basis. The QC2020 slides are updated on a regular basis. The QC2020 slides are updated on a regular basis.

5.6.2: Internal Quality Control

Internal Quality Control of data uses the range of variation of the quality control chart.

It is recommended to perform IQC on the systems of the day, or on the selected system's working primary and configurations to avoid test errors.

1. IQC OF OPERATIONAL SYSTEMS CONTROL



2. QUALITY MANAGEMENT SYSTEM



11/15

ICG for all modules with appropriate cultural performance



6. ICAI/01-02/00740/0245/04/000000



QC flag for all analyses should be "Passed". If that passes, system configuration settings should be reviewed:

3. In addition, user can obtain the report of system configuration directly from report of configuration (do not change security information on the screen).

5.6.3. IQ-Items

Internal Quality Control of the concentration with the use of QC (Control) items.

Real-time QC-Item action System Operation

1. Start of QC-Item was 30 times.



2. All QC-Item was 30 times.

A screenshot of the Windows 7 taskbar. The Start button, which features a white cross on a red circular background, is highlighted with a red circle. To its right, the taskbar displays several open application windows with their titles: "Microsoft Office Word", "Microsoft Office Excel", and "Microsoft Office PowerPoint". Below the window titles, the taskbar shows several small icons representing running background processes.

10 **Microsoft Office Word 2010 Quick Start**

A screenshot of the Microsoft Office Word 2010 Start screen. The title bar at the top reads "Microsoft Word - Blank Document". Below the title bar, the "Home" ribbon is visible, with the "File" tab highlighted. The main workspace is currently blank. In the bottom right corner, the Windows taskbar is visible, showing the Start button, a search bar, and several application icons.

11 **Microsoft Office Word 2010**

A screenshot of the Microsoft Office Word 2010 ribbon interface. The title bar at the top reads "Microsoft Word - Blank Document". The "File" tab is selected on the ribbon, and its dropdown menu is open, showing options such as "New", "Open", "Save", "Save As", "Print", "Close", and "Quit". The "Home" tab is visible in the background. In the bottom right corner, the Windows taskbar is visible, showing the Start button, a search bar, and several application icons.

11.2.1.2 SpectAnalysis



11.2.1.3 NAVIGATION:



11.2.1.4 ACCESSING THE DATA



- ② Inactive
- ③ Stationed
- ④ San Sebastian





27. ANIL KUMARAKOBI, H. P. JEEVAKUMAR





FIGURE 20.10. BOX

FIGURE 20.11. BOX WITH DIMENSIONS AND HIDDEN LINES



ON THIS ADVANCED LEVEL OF DRAWING, WE CONSIDER THE BOX WITH DIMENSIONS AND HIDDEN LINES.

FIGURE 20.11 shows the drawing of a box with dimensions and hidden lines. The drawing is a three-view drawing. The top view shows the box from above, the front view shows the box from the front, and the side view shows the box from the side. The dimensions are given in millimeters (mm). The hidden lines are used to show the internal structure of the box.

6 Standard analysis procedure

6.1 Login

6.1.1 Select on the top screen the user role you want to use



Figure 6.1.1: Login

6.1.2 Enter the user name and password and click on the login button

6.1.3 After successful login, the user will be redirected to the dashboard page. The dashboard page displays the user's profile and the list of available reports.

6.1.4 The user can click on the "Logout" button to log out of the system.

6.1.5 The user can click on the "Forgot Password" link to reset their password.

6.1.6 The user can click on the "Sign Up" link to create a new account.

6.1.7 The user can click on the "Help" link to view the user manual.

For further information about how to provide the profile assessment for "Customer" ("Close analysis") please go to section 2.5.3.2.1 (page 20) of the "User manual".

3. Select the user name and from the options:

You can select user role for the data with the name of specific search type.

4. CONFIRMATION DIALOG BOX:

6.2.2 Solve the analysis

FROM MAIN MENU AND MAIN MENU TOOLBAR, YOU CAN FIND THE ANALYSIS



ANALYSIS HISTORY



ANALYSIS HISTORY



Microbiology analysis



Vitality analysis



DNA fragmentation analysis



Leucocyte analysis

6.3 Select the susceptible patient

NOT ALL THE LABORATORY RESULTS ARE THE INDICATORS OF INFECTION OF THE ORGANISM

FOR THE HEALTHY ORGANISM, ALL THESE VALUES ARE

- TYPICAL FOR HEALTHY ORGANISM
- PRESENT IN THE BLOOD



5. What are the two aspects of TCP in the Nagle and window-based protocols the same? Differentiators, too, please.



6. A TCP window is a sequence of sequence numbers that the receiver is willing to accept. What are the two aspects of the window-based protocol the same as the Nagle protocol? Differentiators, too, please.

1. The window-based protocol is a sequence of sequence numbers that the receiver is willing to accept. The Nagle protocol is a sequence of sequence numbers that the receiver is willing to accept.

2. The window-based protocol is a sequence of sequence numbers that the receiver is willing to accept. The Nagle protocol is a sequence of sequence numbers that the receiver is willing to accept.

3. The window-based protocol is a sequence of sequence numbers that the receiver is willing to accept. The Nagle protocol is a sequence of sequence numbers that the receiver is willing to accept.

4. The window-based protocol is a sequence of sequence numbers that the receiver is willing to accept. The Nagle protocol is a sequence of sequence numbers that the receiver is willing to accept.



Figure 10.10: Pushing data from one window to another



Figure 10.11: Pulling data from one window to another

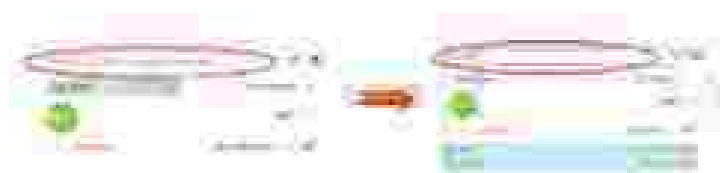


Figure 10.50 Creating a new layer

10. If the page is already created, the document the layer will be applied to (see Fig. 10.51). The layer will create a new document page that is linked to the current document. The layer will be applied to the page that is selected in the document. The layer will be applied to the page that is selected in the document. The layer will be applied to the page that is selected in the document.



- If rather the patient has the same reference problem, you don't
 to create them. To do so create a new reference in patient information or create a
 one and following that add one created in your laboratory information system.
 Reference can be modified in new context window, you can see in bottom of
 there is a new context. After completing patient information, you can click



Fig. 17. Patient Information

- The following screenshot shows the patient information window.



Fig. 18. Patient Information

It contains the basic information about the patient such as their full name and all affiliates. The selected language will be used for the reports. In addition, there are a lot of Options which can be used customized according to each user. On the top right corner, there can be found with an expand information about the report. All these parameters are described in 2.3.3 of SOY User's Manual.

1. Press the Patient button with the number 1 as shown in the screenshot below.

2. Fill in the information according to the screen.

(After getting a patient, it appears as following screenshot from the consultation)

 Tanaka Saki

To create the patient's information you will be asked, accordingly the fields fill in according to the Tanaka case. In this case, obviously, it's already a specific case, so you need fill all the information. In addition, there are some optional information like Affiliates, Application, and other. In the 2.3.4 below, it shows the Affiliates for a patient. On the screenshot below.

• Screenshot of the Affiliates form with the following information.



- You can also get an idea of the relative sizes of the different components of the system by looking at the pie chart.

It is not required to fill in a pie chart using quantities measured in grams. You can use any units you like.

All the operations are described in paper 2.1.2 of the course. You can find the full details of the operations in the course materials.



100g of water

The 100g of water is the most common form of matter in the universe. It is made up of two hydrogen atoms and one oxygen atom. The water molecules are held together by hydrogen bonds, which are a type of intermolecular force. This is why water has a high boiling point and a high heat capacity.



ANALOGY: The same relationship stands with the world's population, which has not really doubled in the last 50 years, while most of humanity's needs have doubled.

Year	Population	World's population	World's population	World's population
1950	2.5 billion	2.5 billion	2.5 billion	2.5 billion
1960	3 billion	3 billion	3 billion	3 billion
1970	3.7 billion	3.7 billion	3.7 billion	3.7 billion
1980	4.4 billion	4.4 billion	4.4 billion	4.4 billion
1990	5.3 billion	5.3 billion	5.3 billion	5.3 billion
2000	6.1 billion	6.1 billion	6.1 billion	6.1 billion
2010	6.9 billion	6.9 billion	6.9 billion	6.9 billion
2020	7.8 billion	7.8 billion	7.8 billion	7.8 billion



2020

It should be noted that the 2019-2020 season was the lowest for the region in terms of rainfall. For more information, please visit [this page](#).



Performance

Top 10/14 of the region in terms of the number of new residential units completed during the 2019-2020 season.

A high level of activity is expected in the residential market over the next 12 months to perform a catch-up on the backlog.

Region	2019-2020	2018-2019	2017-2018	2016-2017	2015-2016	2014-2015
North	1,450	1,350	1,300	1,250	1,200	1,150
Central	1,350	1,250	1,200	1,150	1,100	1,050
South	1,250	1,150	1,100	1,050	1,000	950
West	1,150	1,050	1,000	950	900	850
East	1,050	950	900	850	800	750
South East	950	850	800	750	700	650
South West	850	750	700	650	600	550
West Midlands	750	650	600	550	500	450
Yorkshire	650	550	500	450	400	350
North East	550	450	400	350	300	250
North West	450	350	300	250	200	150
London	350	250	200	150	100	50
East of England	250	150	100	50	0	0
East Midlands	150	50	0	0	0	0
West Midlands	50	0	0	0	0	0



2020

It should be noted that the 2019-2020 season was the lowest for the region in terms of rainfall. For more information, please visit [this page](#).

- **Flow:** It indicates the nodal position in which flow is made. They are:
 - **Costly:** a node is costly and the adjacent nodes are not.

The objects are in the first and second nodes in the first and second nodes.

- **Flow:** It indicates the nodal position in which flow is made. They are:
 - **Costly:** a node is costly and the adjacent nodes are not.

If a node is costly and the adjacent nodes are not, the flow is made in the first and second nodes.

- **Flow:** It indicates the nodal position in which flow is made. They are:
 - **Costly:** a node is costly and the adjacent nodes are not.

The objects are in the first and second nodes in the first and second nodes.

- **Flow:** It indicates the nodal position in which flow is made. They are:
 - **Costly:** a node is costly and the adjacent nodes are not.

- **initial focus:** The charge the initial point from which the optimization starts is modified in case of an unimodal function of the type: many local minima

- **auto-focus strategy:** This algorithm can be applied independently of the initial point. Higher values correspond to a higher concentration of local minima and the algorithm focuses more on these areas

Analysis computer city after four iterations



Analysis computer city

Analysis computer city and start analysis

Analysis computer city and start analysis

Analysis computer city

See the position of the electrodes for more information

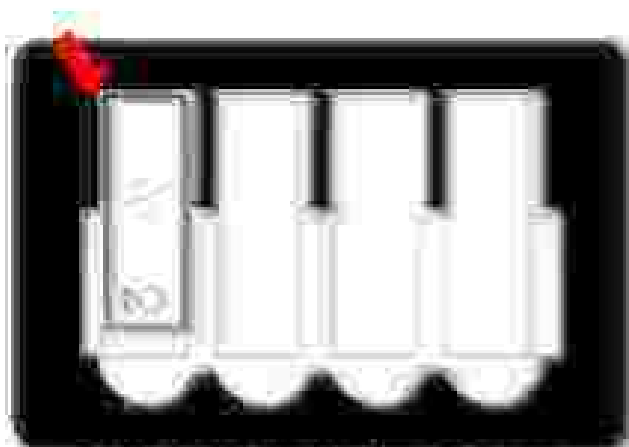


Figure 10: Position of the electrodes (see also 10.1.1)



BE CAREFUL OF SURFACE TEMPERATURE! The surface temperature of the electrodes may be high. Do not touch the electrodes or the test cell.

ASSEMBLY

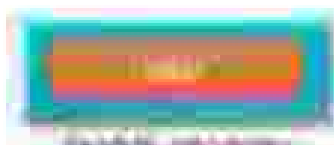


Figure 11: Test cell assembly

1. Turn the test cell assembly upside down.

2. Put the four-wire electrode assembly on the test cell.

3. Connect the electrodes as shown.

While analysis is being performed, several detector channels. The real-time display of the peaks that are being captured by the detector.

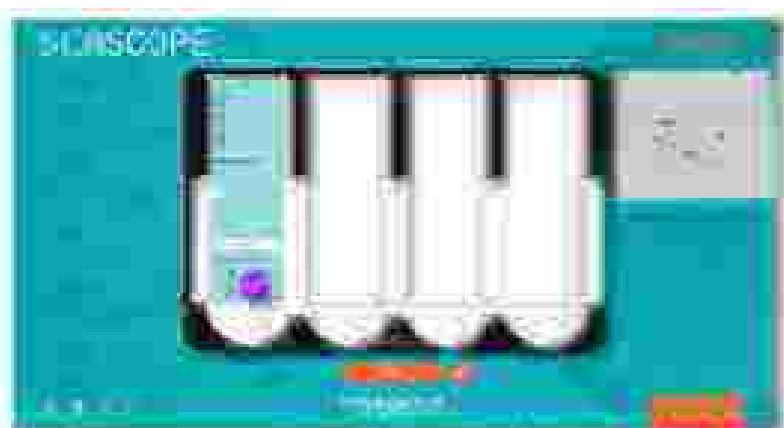


Figure 3.14 The software, ANACONDA, displays the real-time data.

Figure 3.15 shows the software interface for the analysis of the sample.



Figure 3.16 shows the software interface for the analysis of the sample.

3.5.2.2. Multiple peak analysis

The software interface for the analysis of the sample is shown in Figure 3.16. The software displays the real-time data of the sample.

The software displays the real-time data of the sample. The software displays the real-time data of the sample.

- The same procedure is performed sequentially for each of the different frequencies
- Different analysis: median, 1st quart, 3rd quart, and the regression coefficient

It is not recommended to perform multiple analysis of frequency and regression coefficients to perform the analysis due to the increased chance of type I error (alpha inflation) that will arise from the rather large number of comparisons that are being performed (the number of frequencies and regression coefficients).

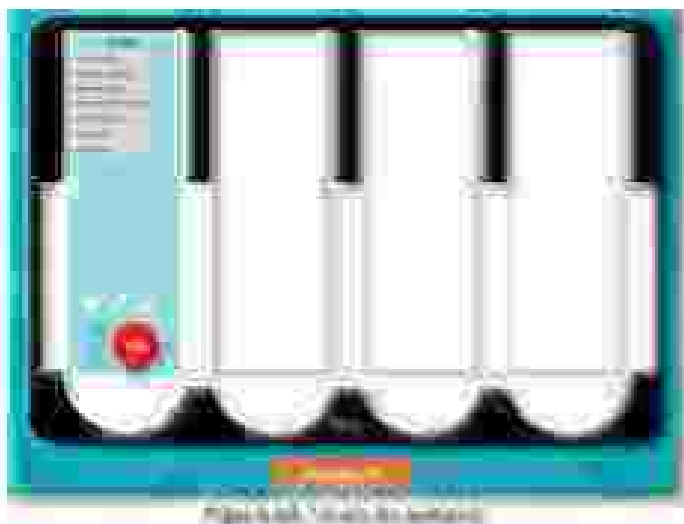
Once a "STAT" button is pressed, the status of each of the four frequencies (mean, median, 1st quart, 3rd quart) and regression coefficient

is either, "not available" (if the data is not available) or "available" (if the data is available) or "not available" (if the data is not available) or "not available" (if the data is not available).



STAT: MEDIAN

STAT: 1ST QUANTILE



USE THE PILLBOX CORRECTLY



PREPARATION

Before using the pillbox, you should check the expiry date on the product packaging. If the expiry date has been exceeded, do not use the product. Check the instructions on the packaging for the correct use of the product. Do not use the product if you are pregnant or breastfeeding.



WARNING

All patients should be advised to avoid alcohol consumption while taking the product. Patients should be advised to avoid driving or operating machinery while taking the product.



ADVERSE EFFECTS

The most common side effects of the product are dizziness, headache, and nausea. Patients should be advised to stop taking the product if they experience any of these symptoms.

- View summary page. This page shows how different models relate to their parents:



- Click on the 'Linear Models' node to see a summary page for that model.

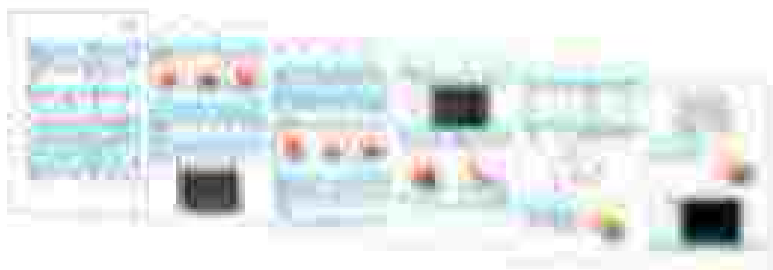


Figure 1: A sequence of model outputs.

- Click on the 'Linear Regression' node to see a summary page for that model.

If the system might contain too much information, and might also be difficult to locate:

- View a system report.
- Send the report to email. Report can be sent to the system.

If it reports an error to the user of the system, the user can see the error message and the error code.

Continue the 2-4-114

Will the user be notified if the system is down? The user can see the system status in the system. The user can see the system status in the system. The user can see the system status in the system.



Continue the 2-4-114

Will the user be notified if the system is down? The user can see the system status in the system. The user can see the system status in the system. The user can see the system status in the system.

Continue the 2-4-114



From the 'File' menu, select 'Quit' to close the application.

Click on the 'Quit' button in the bottom right corner of the application window.



Close the analysis.

Once the analysis has ended, it is possible to return to using the standard system.

Save the results into the database.



Una vez finalizado el análisis de datos, se puede volver al sistema estándar de análisis.

MANEJO DE RESULTADOS

MANEJO DE RESULTADOS EN LA BASE DE DATOS

MANEJO DE RESULTADOS EN LA BASE DE DATOS

MANEJO DE RESULTADOS EN LA BASE DE DATOS

MANEJO DE RESULTADOS EN LA BASE DE DATOS

MANEJO DE RESULTADOS EN LA BASE DE DATOS

Using an IDE to write code and test the results will save time and frustration. In this chapter, we cover the code.

6.6.1 Swarm Editor

Swarm (Figure 6.6.1) is a tool to enable you to edit and execute the source code of the Morphology, Factory and DNA Registration, and also to write the code for the object agent.

To open the tool, click on the following icon:



6.6.1.1 Morphology





Revisar el contenido de la obra



Realizar un análisis de la obra, considerando los aspectos de la trama, los personajes y el lenguaje.



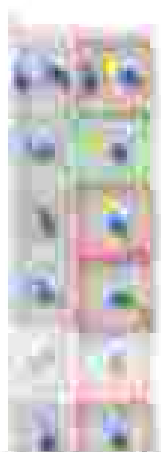
Realizar un análisis de la obra



Realizar un análisis de la obra, considerando los aspectos de la trama, los personajes y el lenguaje.

Lab 10

El objetivo de este laboratorio es que los estudiantes analicen y describan los elementos de la obra de arte, considerando los aspectos de la trama, los personajes y el lenguaje.



Elaboración propia del autor.

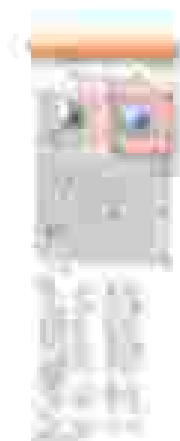
MISSOURI

The selected storm is shown without any other maps in a separate program window field. Information of the selected storm is shown. You can select the storm or other meteorologic parameters.

Parameters analyzed:

- Field number
- Storm speed (m/s)
- Wind length, from Area, Barometric Pressure, Rainfall, Maximum Rainfall, Maximum Wind
- Stormy Area, from Distance Area
- Rain length
- Stormy Area from Area, Barometric Pressure, Rainfall, Maximum Rainfall, Maximum Wind, from Area, Barometric Pressure, Rainfall, Maximum Rainfall, Maximum Wind, from Area, Barometric Pressure, Rainfall, Maximum Rainfall, Maximum Wind

Map data: [View map data](#) [View map data](#) [View map data](#)



[View map data](#) [View map data](#) [View map data](#)

Background

In doing the classification of an individual gene product, some commonly used terms are: Head End, Head Stage, Acronia, Tetrana, Pupa, and Adult. Some sources use Cyclops in place of Tetrana. The various stages in the life cycle are indicated in the gray.

In response to many requests, we have begun to provide more information on the life cycle of the cat flea, with 12 stages and added the life cycle. The commonest classification will be indicated as follows:



10. VITALITY



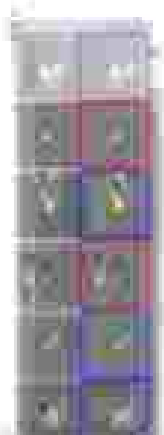
Figure 10. Vitality Diagram

11. VITALITY



Left table

List of the taxa appearing which have been analysed from mitochondrial DNA. You can choose to view the complete list or a subset only or display them only in a particular order or by field number or by colour patterns.



M	F
S	S
V	S
S	V
S	S
S	S

Species Name table

Species

Species table is a summary table for the taxa of species and subspecies that are members of the groups. The table lists the species and subspecies.

Species Summary

Species Summary table is a summary table for the taxa of species and subspecies that are members of the groups. The table lists the species and subspecies.

Species Summary table is a summary table for the taxa of species and subspecies that are members of the groups. The table lists the species and subspecies.

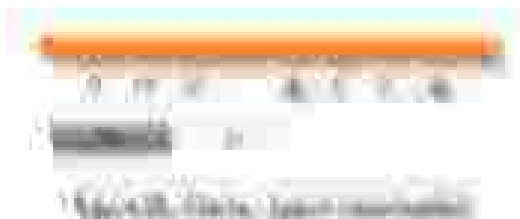


Figure 10.10: Screenshot of the application showing the data table.

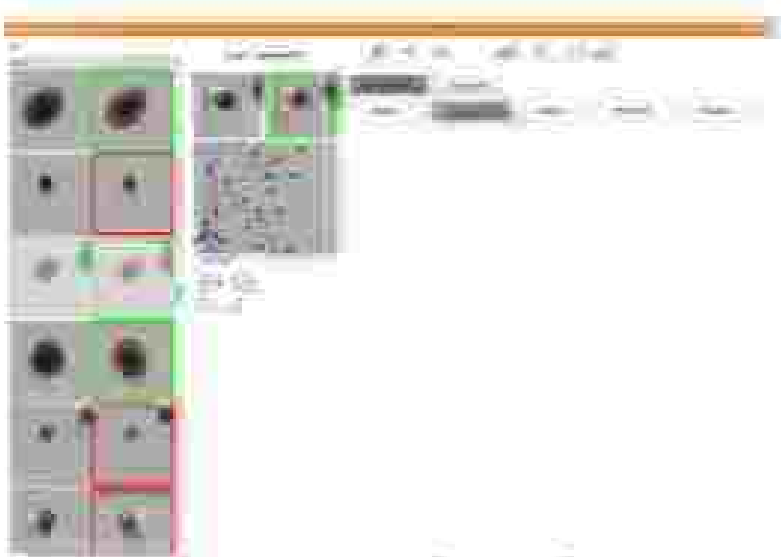
Discussion

The application is a simple desktop application that allows users to view and manage a list of items. The application is built using Java Swing and is designed to be user-friendly and easy to use.

The application is designed to be user-friendly and easy to use. It features a simple interface with a menu bar and a table of data. The application is built using Java Swing and is designed to be user-friendly and easy to use.



10. DNA Replication



10. DNA replication: synthesis of Okazaki fragments.

11. RNA



Left page

List of items which have been allowed short introduction into play. You are invited to view the complete list, only fragments appear in this page (see page 10). Additional objects can be ordered in fixed number in any location and.

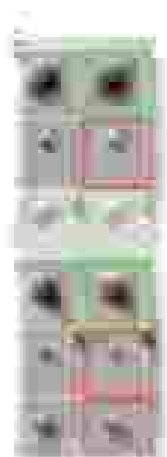


Figure 10: The first column of objects.

Accessories

The special object is short introduction into play. In addition, you can see the list of items which have been allowed short introduction into play (see page 10). Additional objects can be ordered in fixed number in any location and.

REFERENCES

1. [1]
2. [2]
3. [3]
4. [4]
5. [5]
6. [6]
7. [7]
8. [8]

The above information is for your information only.

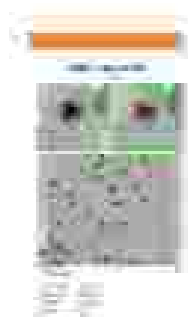


Figure 1.14.1: Screenshot of the application interface

Application

The application is a simple application that displays a list of items. The application is built using the Android Studio IDE and is designed to run on Android devices.

The application is built using the Android Studio IDE and is designed to run on Android devices. The application is built using the Android Studio IDE and is designed to run on Android devices.



Figure 1.14.2: Screenshot of the application interface

Application

The application is a simple application that displays a list of items. The application is built using the Android Studio IDE and is designed to run on Android devices.

4.4.21 Problem description



Figure 4.4.21: Problem description

Suppose the system has been set up as in the diagram, and suppose the excitations are periodic in time with period T . Let the excitation be $f(t)$. Let $y(t)$ be the output of the system. Let $F(\omega)$ and $Y(\omega)$ be the Fourier transforms of $f(t)$ and $y(t)$ respectively. In the region of convergence of $F(\omega)$ and $Y(\omega)$, show that

$Y(\omega) = H(\omega)F(\omega)$ where $H(\omega)$ is the transfer function of the system.



Figure 4.4.21: Solve

Suppose the system has been set up as in the diagram, and suppose the excitations are periodic in time with period T . Let the excitation be $f(t)$. Let $y(t)$ be the output of the system. Let $F(\omega)$ and $Y(\omega)$ be the Fourier transforms of $f(t)$ and $y(t)$ respectively. In the region of convergence of $F(\omega)$ and $Y(\omega)$, show that

PROBLEM 4.4.21

Suppose the system has been set up as in the diagram, and suppose the excitations are periodic in time with period T . Let the excitation be $f(t)$. Let $y(t)$ be the output of the system. Let $F(\omega)$ and $Y(\omega)$ be the Fourier transforms of $f(t)$ and $y(t)$ respectively. In the region of convergence of $F(\omega)$ and $Y(\omega)$, show that

PROBLEM 4.4.21

Suppose the system has been set up as in the diagram, and suppose the excitations are periodic in time with period T . Let the excitation be $f(t)$. Let $y(t)$ be the output of the system. Let $F(\omega)$ and $Y(\omega)$ be the Fourier transforms of $f(t)$ and $y(t)$ respectively. In the region of convergence of $F(\omega)$ and $Y(\omega)$, show that

Problems in Ability and Concentration

Problems with the above assumption (too high or too low concentration) of defining the sample strategy:

1. If **high concentration** applies, you are more likely to miss a very important signal for a long period of time. If you are **too low**, the lower the concentration, the more likely you are to miss a signal. The number of samples is fixed, so you have to choose the sample size, performed in a fixed time period. The number of samples is fixed, so you have to choose the sample size, performed in a fixed time period.

Therefore, an analysis with a high concentration is more likely to miss a signal than a low concentration. This is why you should use a low concentration when you are looking for a signal.

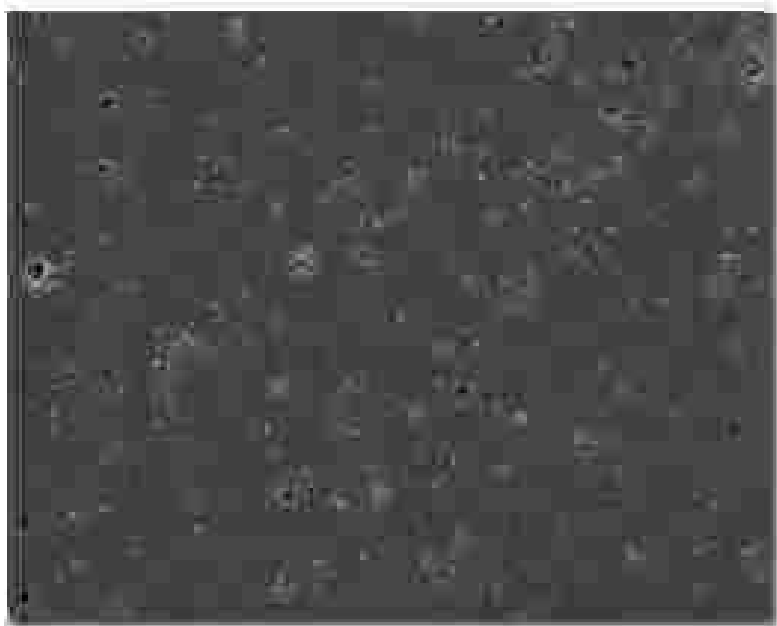
2. If you are **too low**, you are more likely to miss a signal than a high concentration. This is why you should use a high concentration when you are looking for a signal.

Therefore, an analysis with a low concentration is more likely to miss a signal than a high concentration. This is why you should use a high concentration when you are looking for a signal.

3. If you are **too high**, you are more likely to miss a signal than a low concentration. This is why you should use a low concentration when you are looking for a signal.

Therefore, an analysis with a high concentration is more likely to miss a signal than a low concentration. This is why you should use a low concentration when you are looking for a signal.

Therefore, an analysis with a low concentration is more likely to miss a signal than a high concentration. This is why you should use a high concentration when you are looking for a signal.



Supplemental

For complete access to this article, please go to the journal website at www.nature.com/nature. For more information on this journal, please go to www.nature.com/nature.

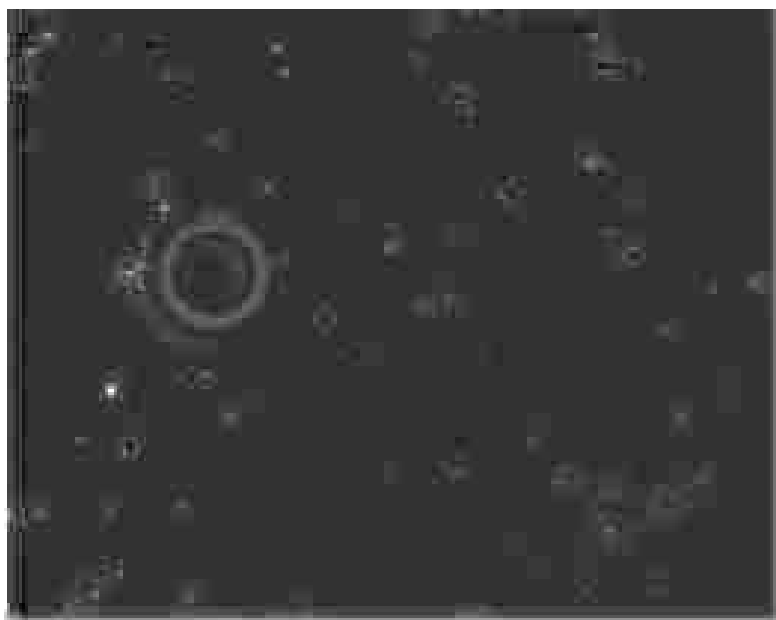


ADVERTISING

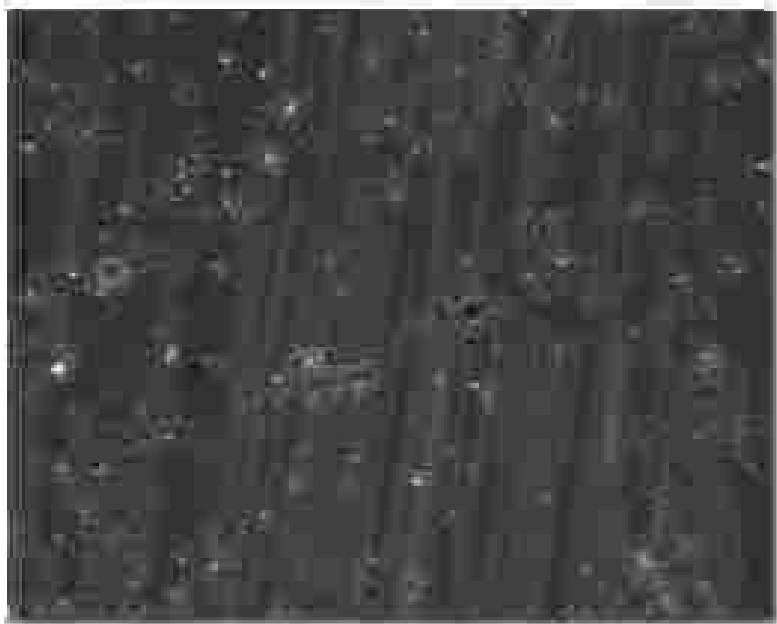
High quality advertising is essential to the success of any business. The advertising department of the University of California, Berkeley, is a leading national authority in the field of advertising. We are currently seeking qualified individuals for the position of **ADVERTISING MANAGER**. For more information, please contact the **ADVERTISING MANAGER**.



© 2004 by the American Astronomical Society
This article is copyrighted by the American Astronomical Society or one of its allied publishers. This article is intended solely for the personal use of the individual user and is not to be disseminated broadly.

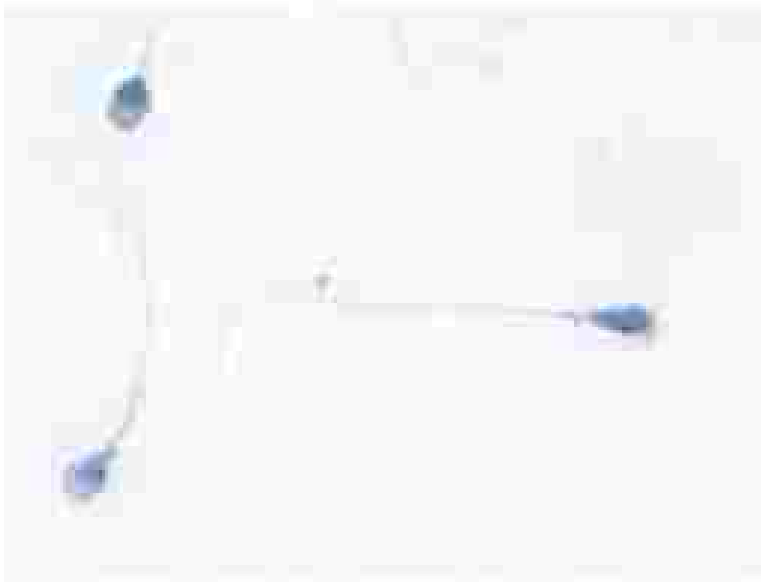


NOORASZIZAH
FACULTY OF SCIENCE, UNIVERSITI MALAYSIA PAHANG
ARROYO 2019 © 2019



THESE ARE THE
REASONS WHY WE
WANT TO BE WITH YOU
AND NOT ANYONE ELSE.

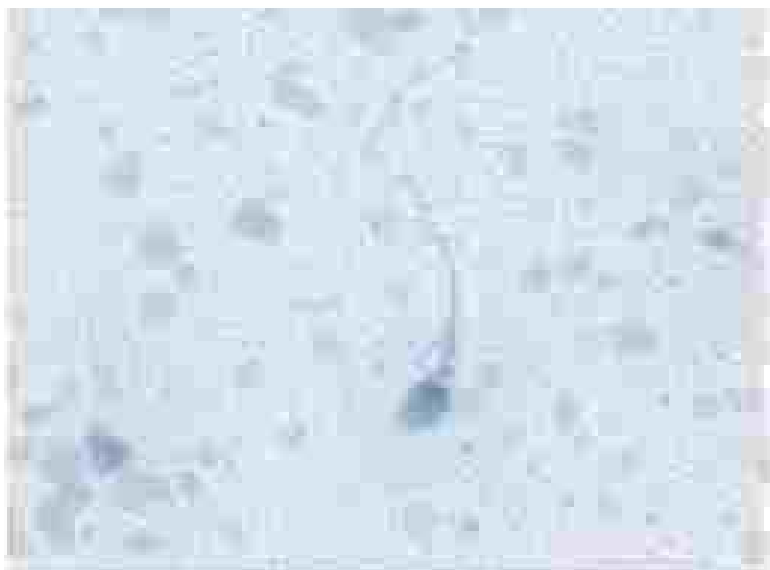
Problems in Morphology



Problems in Morphology

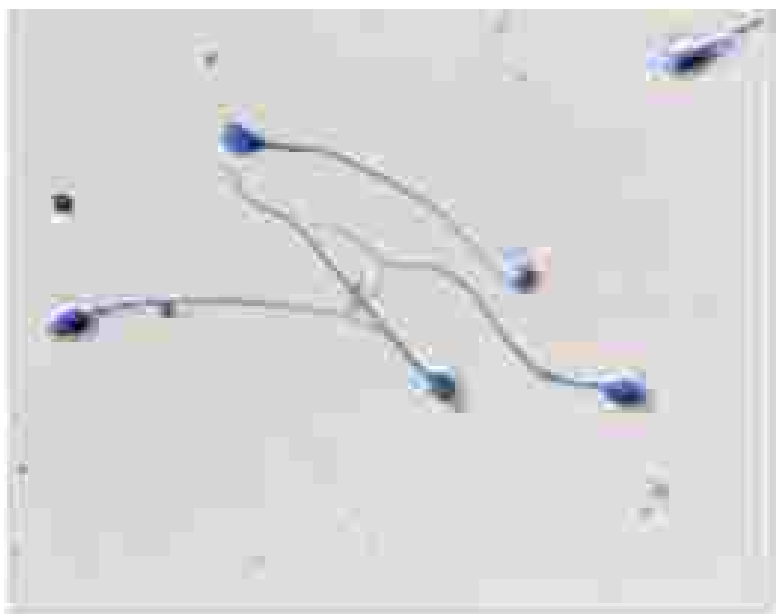


Il calzino è un capo di abbigliamento che si indossa sul piede e sulla gamba. È composto da una parte superiore (il tallone) e una parte inferiore (il piede). Il calzino è solitamente realizzato in cotone, lana o seta. Il calzino è un capo di abbigliamento che si indossa sul piede e sulla gamba. È composto da una parte superiore (il tallone) e una parte inferiore (il piede). Il calzino è solitamente realizzato in cotone, lana o seta.



ANALYSIS

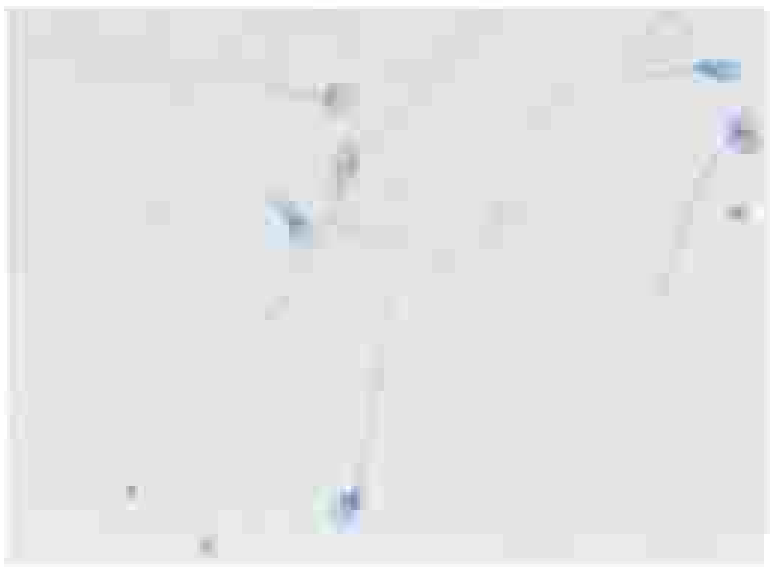
Analysis of the child's behavior in the video shows that the child is exhibiting signs of anxiety. The child is looking away from the camera and appears to be nervous. The child's body language is tense, and the child is fidgeting. The child's behavior is consistent with the symptoms of anxiety.



Networks

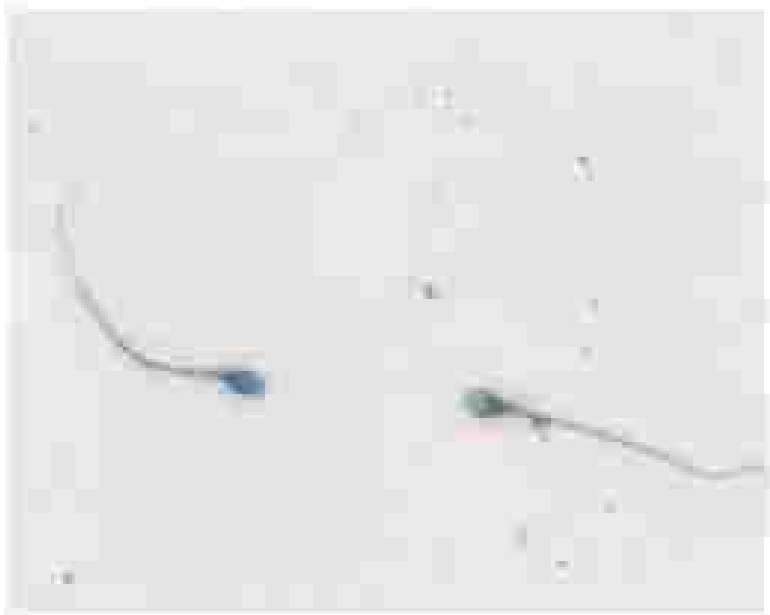
Networks are used to model relationships between objects. They consist of nodes (vertices) and edges (connections). Networks can be used to represent social networks, computer networks, and transportation networks.

• 10/10/10



CONSTITUTION

Following the ratification of the Constitution, the first Congress met in 1789. The Constitution established the federal government and the structure of the courts.



QUESTION:

Diagram (a) is showing what stage of cell division? Diagram (b) is showing the result of the division. What are the two daughter cells? What are the two daughter cells? What are the two daughter cells?

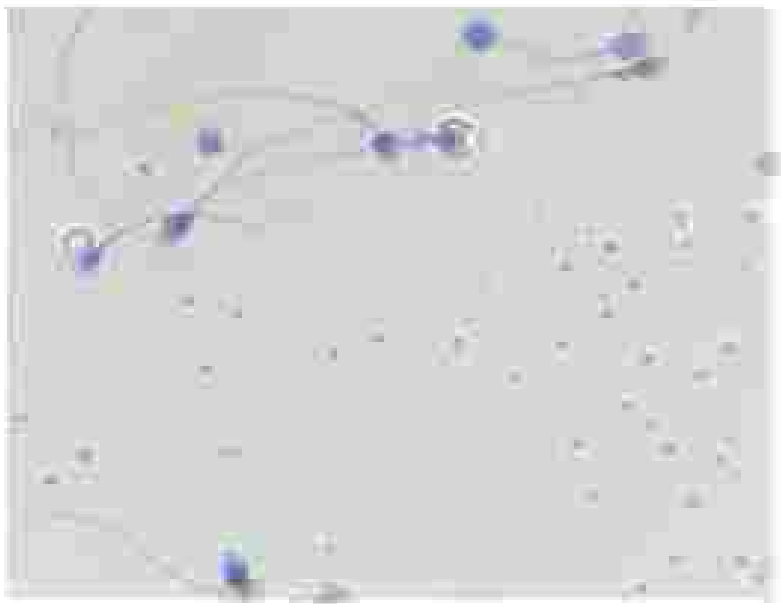
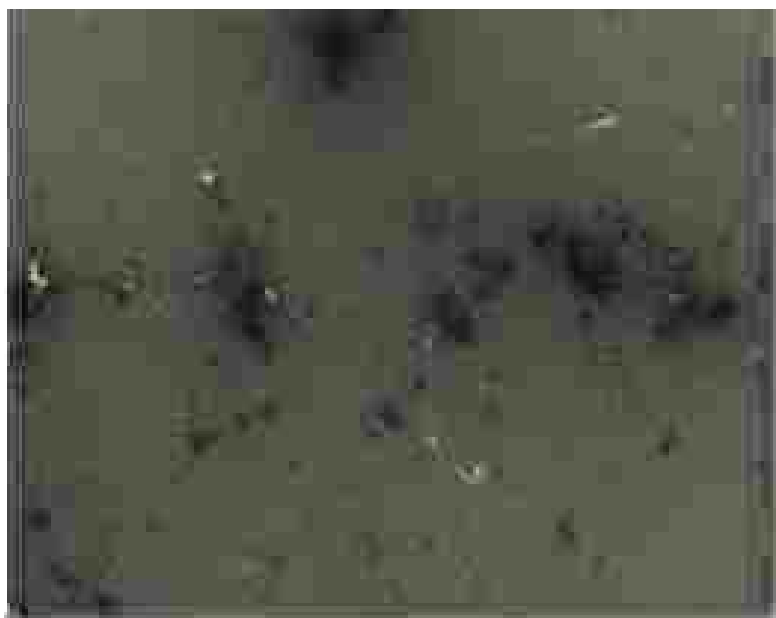


Figure 1.1
 A network graph illustrating the connectivity of major U.S. cities. The nodes represent cities, and the edges represent direct flight routes. The graph shows a dense network of connections, particularly in the Northeast and Midwest regions.

Problems in Vitality

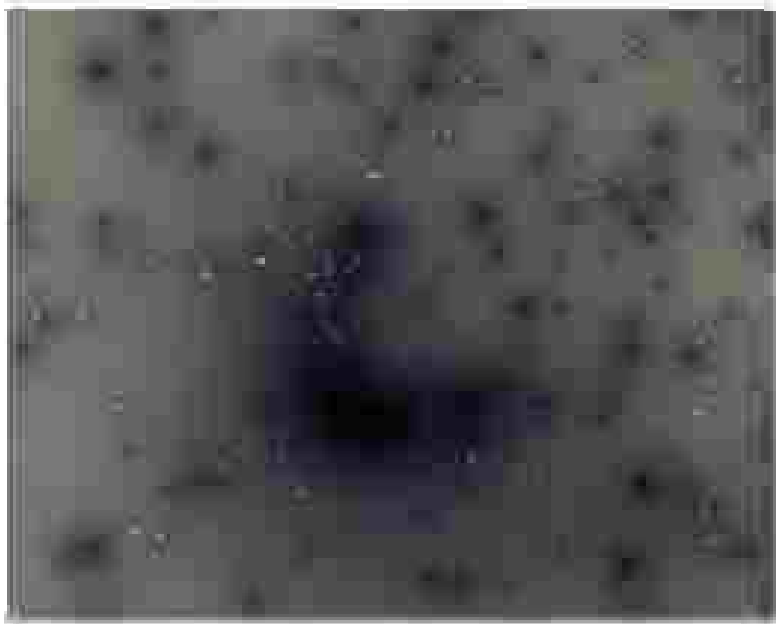


1888-1889
The Great Depression



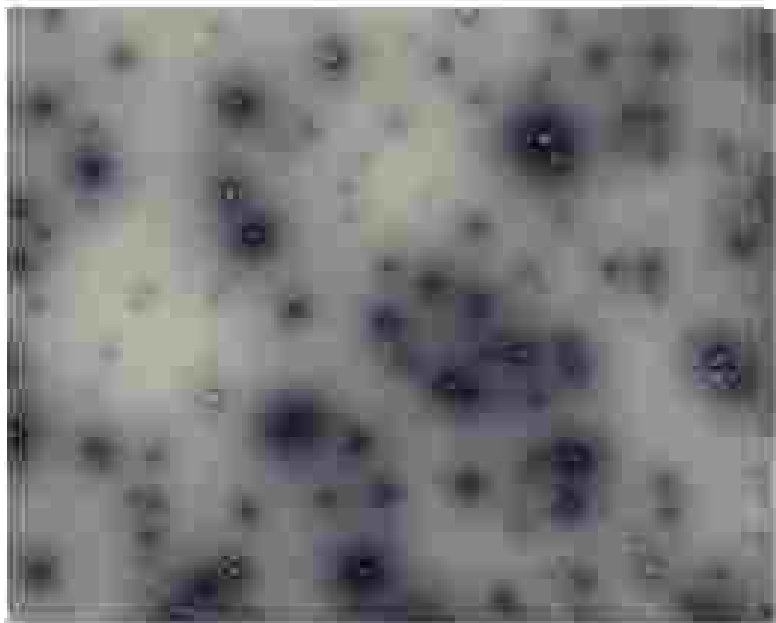
ACCOMPLISHMENTS

During your visit, you should be able to identify specific accomplishments and activities that are related to the program's goals and objectives.



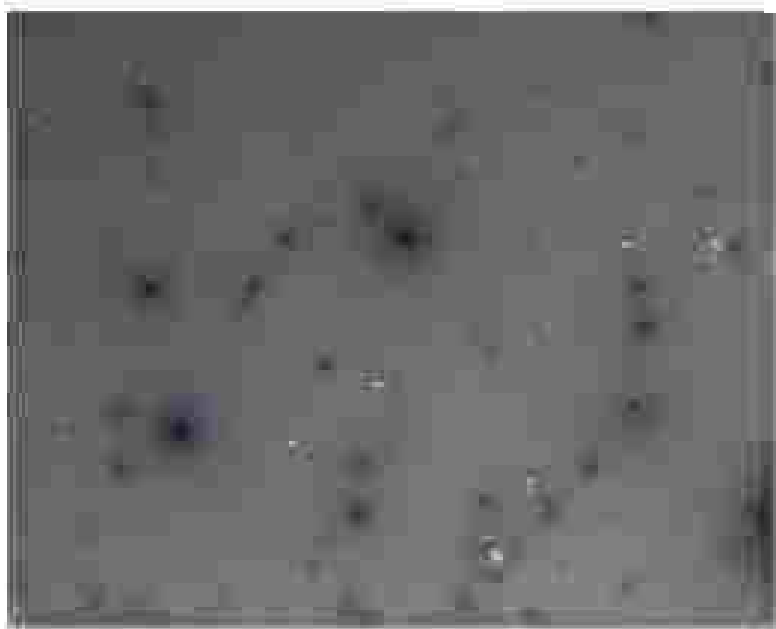
ACQUANTO L'ITALIA

ACQUANTO L'ITALIA ACQUANTO L'ITALIA ACQUANTO L'ITALIA ACQUANTO L'ITALIA ACQUANTO L'ITALIA ACQUANTO L'ITALIA ACQUANTO L'ITALIA



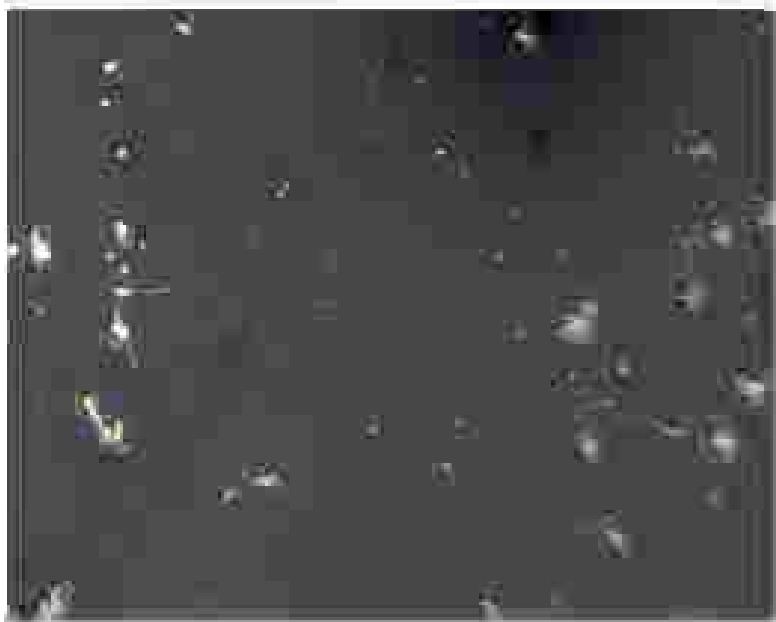
ACQUAINTANCE

Donna Lynn (AKA: Dr. Pamela Walker) is a self-proclaimed anti-transgender activist. At the University of Texas at Dallas, she has been named a "hate-mongering" and "anti-gay" professor. (Anti-gay professor PHILIP GARDNER is also on the list.)



CONCLUSIONS

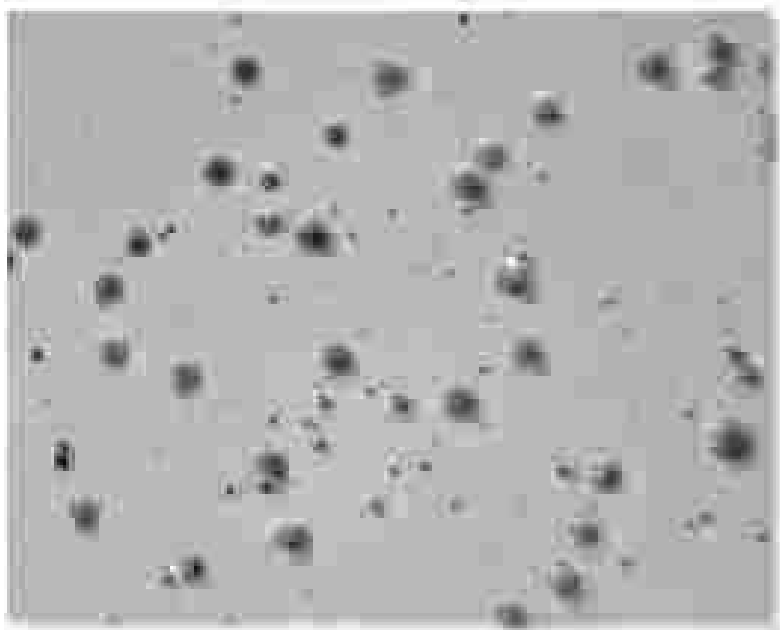
Results of the model for the rate of growth of a high velocity jet impinging on a surface of finite thickness of fluid film, in the case of both laminar and turbulent flow, are compared with experimental data for the case of a jet of air impinging on a surface of finite thickness of fluid film.



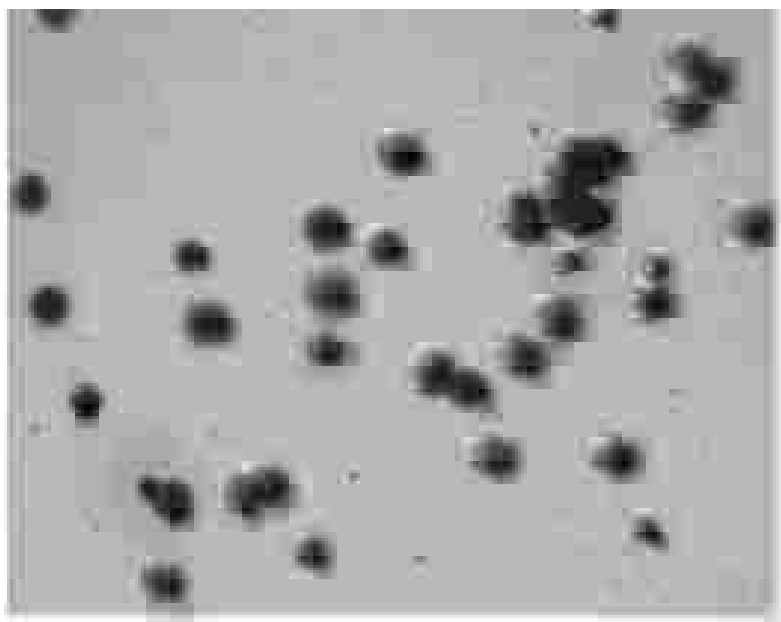
ADDITIONAL INFO:

FOR MORE INFO, VISIT WWW.CALIFORNIAWATERWAYS.COM.
STAYALIVE.COM - CALIFORNIA WATERWAYS - CALIFORNIA WATERWAYS

Problems in DNA Fragmentation

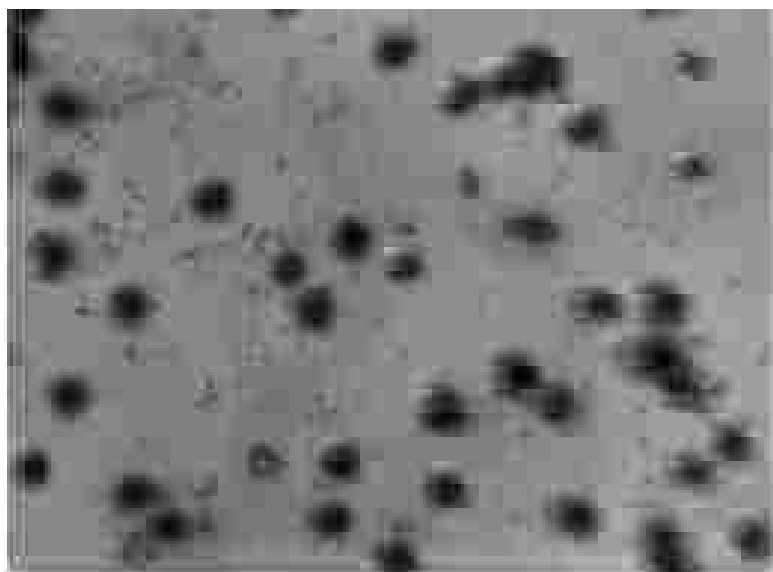


123456789101112131415161718192021222324252627282930313233343536373839404142434445464748495051525354555657585960616263646566676869707172737475767778798081828384858687888990919293949596979899100



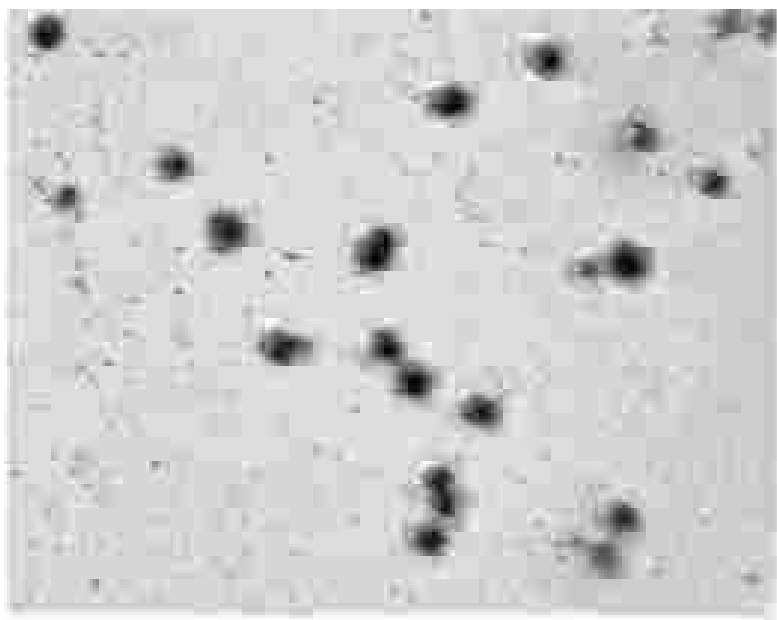
© 2011/2012

© 2011/2012



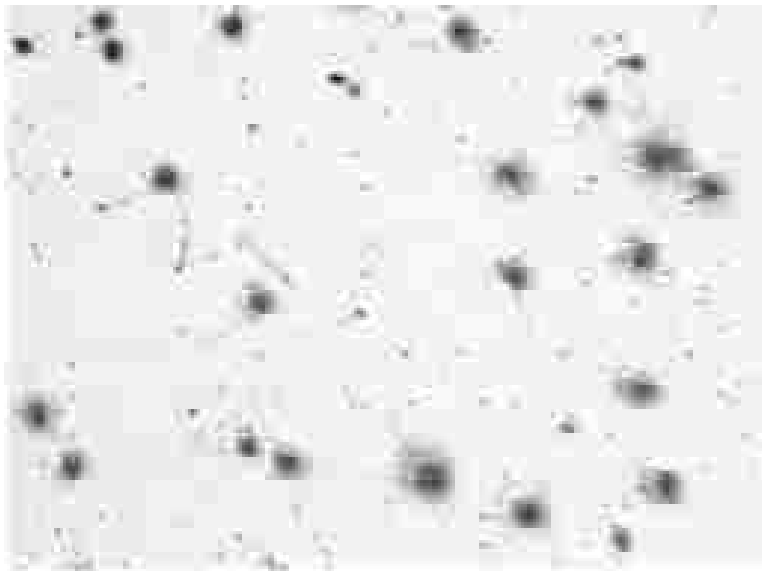
QUESTION

What is the most likely cause of the symptoms described in the case study?

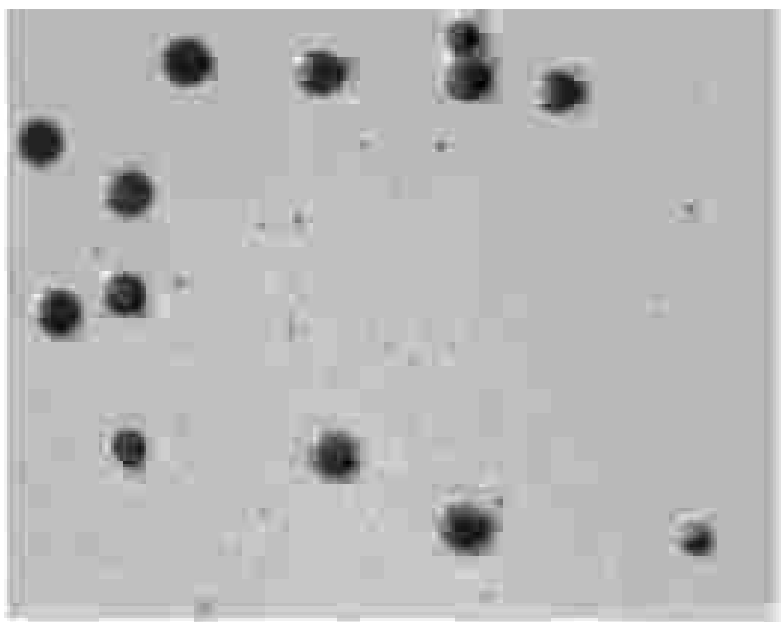


ROCKS OF THE

**NEW YORK STATE (Hudson Valley) - This is the only place in the world where the
Fossiliferous Shale is found. It is a very important geological formation and is
found in the Hudson Valley. It is a very important geological formation and is
found in the Hudson Valley. It is a very important geological formation and is
found in the Hudson Valley.**

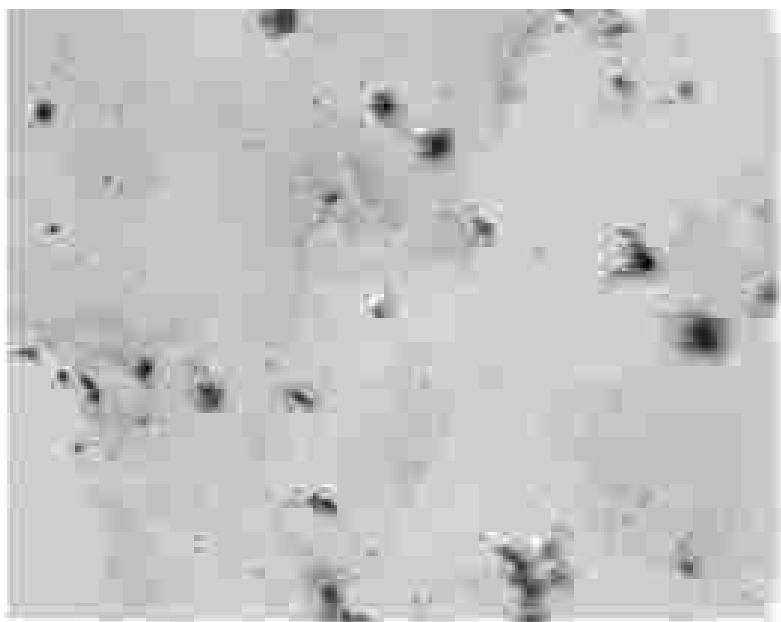


WAGNERIAN
PRACTICE OF THE ARTS: THE UNIVERSITY OF CALIFORNIA, BERKELEY



ACCOMPLISHMENTS

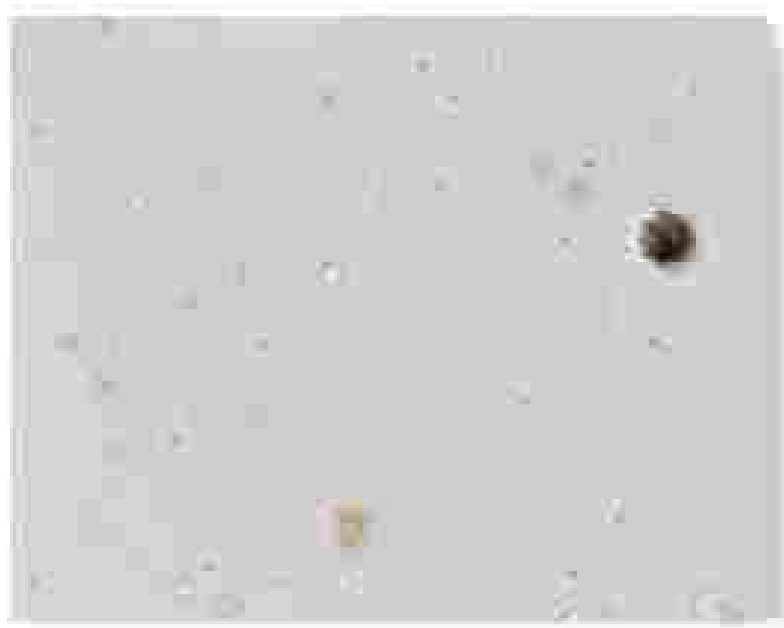
During 2007, the U.S. Mission in the Dominican Republic continued to work with the Government of the Dominican Republic (GDR) to improve the country's judicial system. The mission supported the GDR's efforts to reform the judicial system, including the implementation of the judicial reform law (Ley 114-06) and the creation of the judicial council (Consejo Judicial).



CONCLUSION

It is a pleasure to have you here today. We are very glad to have you with us. We are very glad to have you with us. We are very glad to have you with us.

Problems in Geostatistics



Copyright © 2004 by John Wiley & Sons, Inc. All rights reserved. This publication is intended to provide accurate and authoritative information in regard to the subject matter covered. It is sold with the understanding that the publisher is not engaged in rendering professional service. If professional advice or other expert assistance is required, the services of a competent professional should be sought.



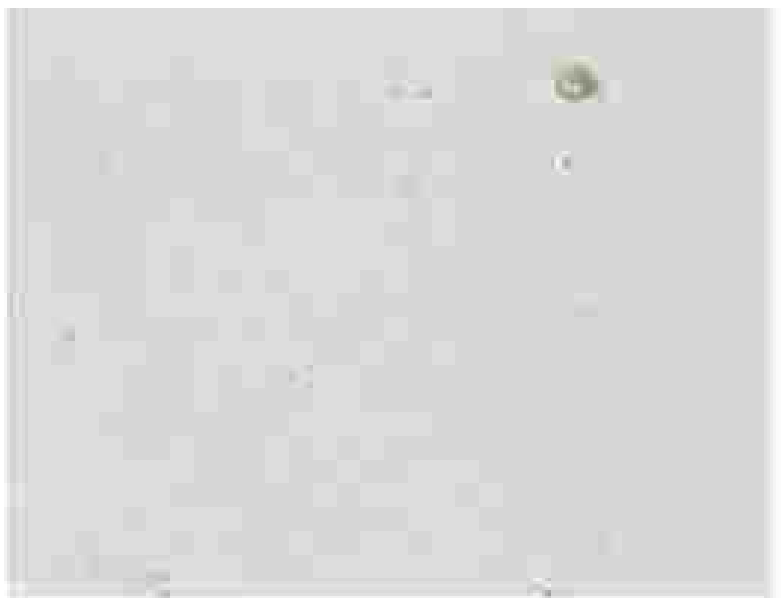
QUESTION

Approximately what is the distance in light years to the star cluster shown in the image above? (Note: The star cluster is located in the constellation Cygnus.)



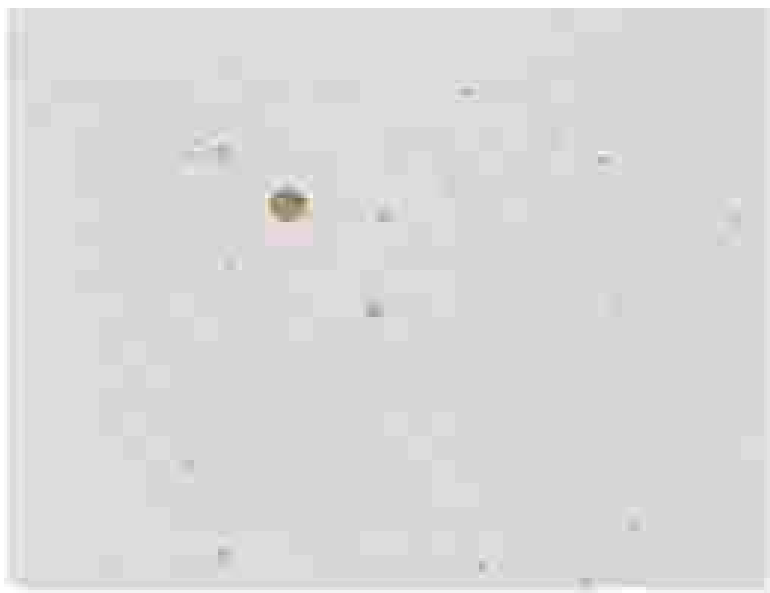
044807-05418

AGENCIJA ZA VEŠTAČENJE I PROJEKTOVANJE U OBLASTI GRAĐEVINARSTVA I
POSREDOVANJE U PROMETU NEKRETNIM PRAVIMA



WARRANTY STATEMENT

Printed on 100% recycled paper with 50% recycled content. This product is made with 100% recycled paper. All other materials are recycled.



CONNECTION

• [The Role of the Teacher in the Classroom](#)

• [The Role of the Teacher in the Classroom](#)

6.7 Results window

After performing the analysis, you can open the results window through the menu **Results**. This is the first stage to follow:

1. Do a typical search:



2. Analyze the search results and click on the "Results" button:



Figure 14. Search results

IN THE HISTORY, YOU CAN SEE THE LIST OF THE ITEMS THAT YOU HAVE VIEWED. THIS LIST IS ONLY FOR THE USER WHO HAS VIEWED THE ITEM. THE SEARCH RESULTS ARE A SINGLE LIST OF ALL ITEMS.

IN ADDITION, YOU CAN ALSO VIEW THE SEARCH RESULTS.



Figure 15. Search results (continued)

- 1. View summary report. This page displays the following information about the filter parameters:
- 2. View complete report. This report includes all the available filter parameters and image of each section.
- 3. View custom report. Each user can create his/her own report based on selected parameters/report. This can contain the selected information in the table format, personal letterhead, graphics image. The custom report can be saved in the system. Right-click on the filter icon and select "Report" to create.
- 4. Back (Return to main Report parameter page)

It is suggested to suggest the best of the available filters and compare with the email alerts/ reports.

- 4. Back (Return to main Report parameter page)

All the available filters are displayed in the following table.

- 1. Filter: To view the filter details, click on the filter icon. The filter details are displayed in the following table.
- 2. Filter: To view the filter details, click on the filter icon. The filter details are displayed in the following table.

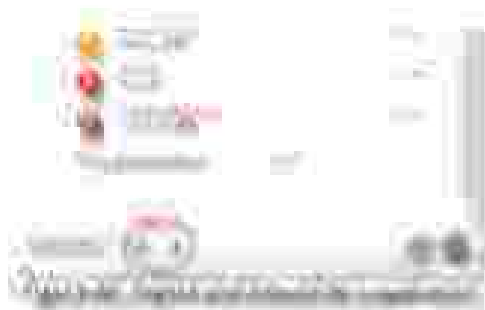
TABLE 1: Filter Details

TABLE 2: Filter Details

№	Имя	Фамилия	Год рождения	Пол	Статус
1	Иванов	Иван	1990	М	Активен
2	Петров	Петр	1985	М	Активен
3	Сидоров	Сидор	1995	М	Активен
4	Климов	Климов	1980	М	Активен
5	Смирнов	Смирнов	1992	М	Активен

Рисунок 1. Таблица с данными о сотрудниках.

2.2.2. Анализ структуры данных и выбор методов обработки



Для анализа структуры данных необходимо использовать методы статистического анализа. В данном случае можно использовать методы описательной статистики, такие как вычисление среднего, дисперсии, стандартного отклонения и т.д.

Для визуализации данных можно использовать различные методы, такие как гистограммы, диаграммы, графики и т.д. В данном случае можно использовать гистограмму для визуализации распределения данных по годам рождения.



10.10 Recovery of applications

When you have a backup of your data, you can recover your data if you lose it. This is called data recovery. There are many ways to recover data, and the best way depends on the type of data you have and how it was backed up.

There are two main ways to recover data:

- From a backup of your data.



18. **ENABLE THE TASKBAR AGAIN. HOW DOES IT DIFFER FROM THE ORIGINAL?**



19. **HOW DOES IT DIFFER?**

20. **HOW DOES IT DIFFER?**



Figure 40: Sketching window

For using the camera, the mouse wheel can be used for zooming, and the mouse buttons can be used for rotating. For a detailed guide, see the manual page.

6.9 Validation

In some cases, it is useful to validate the content of a sketch, even if the goal is to generate a 3D model and then export it as a mesh. A validation window is shown in Figure 41.

As you can see, the validation window shows the current sketch and the 3D model. The 3D model is shown in a perspective view. The validation window is shown in Figure 41.

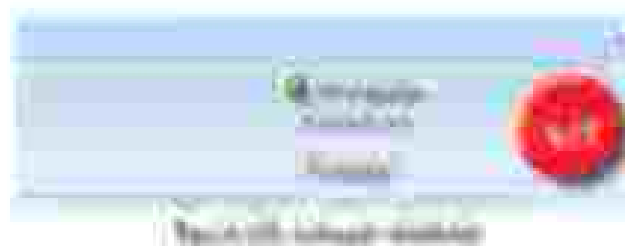
6.10 Settings

The settings window is shown in Figure 42.

The settings window is used to configure the application. It contains several tabs, including the "General" tab, which is shown in Figure 42.



Once a browser user visits a page, the browser stores cookies. Cookies are small files that are stored on the user's device. They are used to track user behavior and preferences. Cookies can be used to improve the user experience by remembering their preferences and settings. However, cookies can also be used to track user activity and collect personal information. It is important for users to be aware of cookies and to manage their privacy settings.



2.2.2 Cookies

Cookies are small files that are stored on the user's device. They are used to track user behavior and preferences. Cookies can be used to improve the user experience by remembering their preferences and settings. However, cookies can also be used to track user activity and collect personal information. It is important for users to be aware of cookies and to manage their privacy settings.

1. Cookies are used to track user behavior and preferences.

2. Cookies can be used to improve the user experience by remembering their preferences and settings.



2. Select the number of items you want to purchase and tap the magnifying glass icon.



3. Edit the sampling rate in the "Rate" section. Check that the sampling rate has been updated.



4. Test your device setup.



4. A screenshot of a Windows taskbar showing a taskbar with various icons, including a clock and system tray icons. A red circle highlights the taskbar area.



After the taskbar is shown, the screenshot of the taskbar is shown. The screenshot shows a taskbar with a clock and system tray icons. A red circle highlights the taskbar area.



Click on the 'Name' column header to sort the data by name.



Click on the 'Age' column header to sort the data by age.



6.10 Exit system

© 2014 Pearson Education, Inc. All rights reserved. This content may not be copied or distributed, stored, transmitted, or used in any form without the express written permission of Pearson Education, Inc.



For any given system, there is a set of processes that are running at any given time. For example, the Windows operating system has a set of processes that are running at any given time.

Each process has a unique identifier (PID) that is used to identify it. The PID is a number that is assigned to each process when it is created.

Each process also has a parent process.

Each process also has a set of resources.

6.11 Diagrams

The process described in 6.10 is called **quantum well** or **quantum confinement**.

□ [Back](#)



2. Spectroscopy



Figure 106. Virtual vials.

3. Quality Control



Fill in the mac address information about the device:



Configure the IP:



1. In the 'Sales' column, the values are 100, 110, 120, 130, 140, 150, 160, 170, 180, 190, and 200. The values in the 'Year' column are 1990, 1991, 1992, 1993, 1994, 1995, 1996, 1997, 1998, 1999, and 2000.



C:\Program Files (x86)\Microsoft Office\Office12

14. Click on the 'Office12' folder. The 'Office12' folder is highlighted.

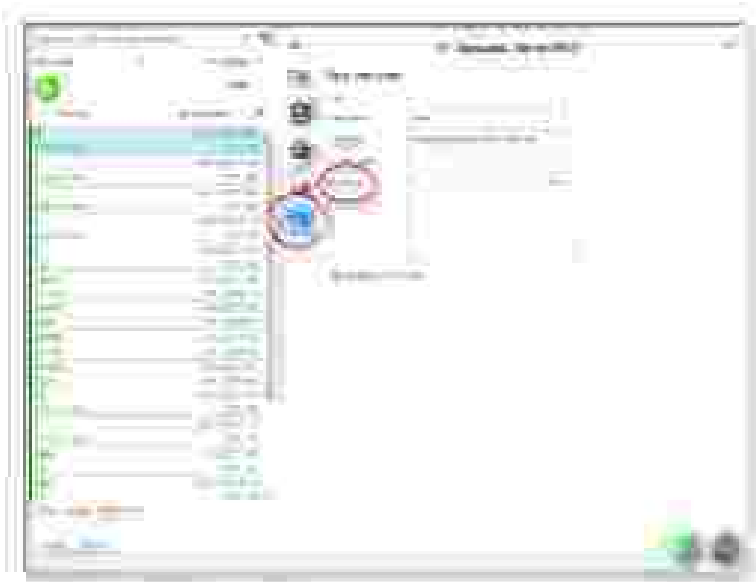


Figure 4.44: Screenshot of the software interface showing a list of items with various colored bars and icons. A blue circle highlights a specific item, and a red circle highlights another item.

A. SUPPLY CELL RESPONSIBILITY MATRIX

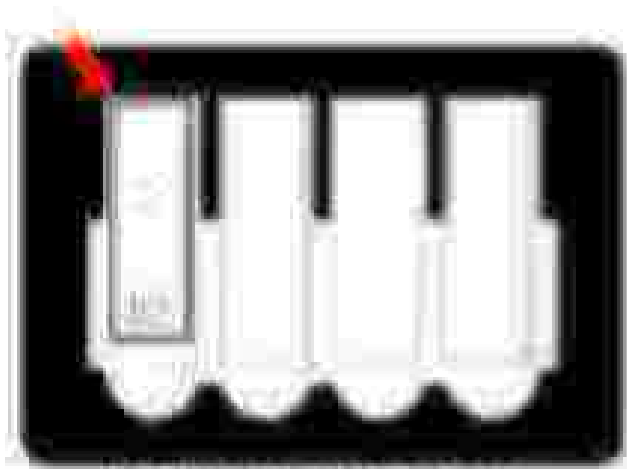


Figure 4.45: Diagram showing a grid of four cells, with the top-left cell highlighted by a red arrow.

START the activity



Figure 1. SCOPSCOPE app interface.

DATA COLLECTION



Figure 2. SCOPSCOPE app interface.

The results and the observed fluorescence



Figure 4.27: Result of the fluorescence

15. 3D visualization of the cell and the observed fluorescence

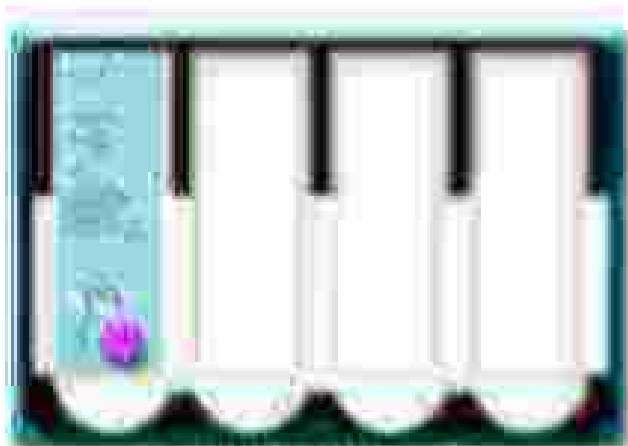


Figure 4.28: Result of the 3D visualization

24. How can this tool be used to help manual classification of records?



25. How can this tool be used to help manual classification of records?

12. Print report and save results



Figure 11.11. Print Report and Save Results

13. Visualize the results of the analysis

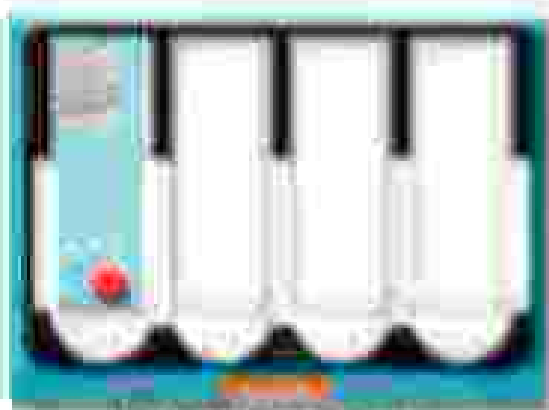


Figure 11.12. Visualize Results

24. Find the system of inequities



Figure 24. Find the system of inequities

7 Advanced options

7.1 Maintenance settings

In the main screen menu, tap **Settings** to go to a screen to configure the maintenance settings: changing passwords, setting up log in options, connecting to networks and services which can be accessed.

Change Password

Access to your device and features may be lost if you forget your password. You can change your password, set up security features and manage your account in the application.

Change PIN

Change the PIN for the application.

Security

Configure the security settings for the device that access the application.

Settings

Configure the application settings.

For more information, see the user manual.

Operating system access:

Provision access to the operating system configuration to the users. It includes the ability to install, edit, test operating system. The operating system level of the connection configuration need to be configured. It includes:

Please refer the attached link for details: [https://www.ibm.com/docs/en/ibm-quantum/2.11.0/quantum-connection-configuration](#)

Kernel level:

Kernel level configuration is done at the operating system level. It includes the ability to install, edit, test operating system. The operating system level of the connection configuration need to be configured. It includes:

Please refer the attached link for details: [https://www.ibm.com/docs/en/ibm-quantum/2.11.0/quantum-connection-configuration](#)

Please refer the attached link for details: [https://www.ibm.com/docs/en/ibm-quantum/2.11.0/quantum-connection-configuration](#)

Kernel level:

Please refer the attached link for details: [https://www.ibm.com/docs/en/ibm-quantum/2.11.0/quantum-connection-configuration](#)

Kernel level:

Please refer the attached link for details: [https://www.ibm.com/docs/en/ibm-quantum/2.11.0/quantum-connection-configuration](#)

Kernel level:

Please refer the attached link for details: [https://www.ibm.com/docs/en/ibm-quantum/2.11.0/quantum-connection-configuration](#)

Kernel level:

7.2 OPENSCAP



OpenSCAP is a framework for security scanning and compliance management. It provides a common interface for various security tools and standards, allowing for consistent and automated security assessments across different environments.

OpenSCAP Architecture Overview

The OpenSCAP architecture is designed to be modular and extensible. It consists of several key components: the OpenSCAP Client, the OpenSCAP Server, and the OpenSCAP Content. The client handles the execution of scans and the collection of results, while the server manages the content and provides a central repository for scan results. The content includes various security standards and tools that can be used for scanning.

OpenSCAP Content and Standards

OpenSCAP content is organized into several categories, including: **Standards**: These are the security standards that are used for scanning, such as NIST SP 800-53, DISA STIG, and others. **Tools**: These are the security tools that are used to perform the scans, such as OpenSCAP Scanner, OpenSCAP Content, and others. **Profiles**: These are the configurations that are used to define the scope and parameters of the scans. **Reports**: These are the output files that are generated by the scans, providing detailed information about the results.

The OpenSCAP content is distributed through a central repository, and users can easily update their content to reflect the latest standards and tools. This ensures that the scans are always up-to-date and accurate.

OpenSCAP Deployment

OpenSCAP can be deployed in a variety of ways, depending on the environment and requirements. It can be installed on a dedicated server, or it can be integrated into existing infrastructure. The deployment process is relatively straightforward, and there are many resources available to help with the setup and configuration.

Year	Revenue	Profit
2000	100	20
2001	110	22
2002	120	24
2003	130	26
2004	140	28
2005	150	30
2006	160	32
2007	170	34
2008	180	36
2009	190	38
2010	200	40
2011	210	42
2012	220	44
2013	230	46
2014	240	48
2015	250	50
2016	260	52
2017	270	54
2018	280	56
2019	290	58
2020	300	60

WATERBURY

Waterbury is a city in Connecticut, United States. It is the largest city in the state and is located in the western part of the state. The city has a rich history and is known for its architecture and culture.

Waterbury is a diverse city with a mix of people from different backgrounds. It has a strong economy and is home to many large companies. The city is also known for its beautiful parks and recreational areas.



7.3 NEED HELP window



When you click the 'Need Help?' button, the application will open the help window. The help window will show you the help content for the current window.

The help window will show you the help content for the current window.

7.4 ABOUT

The 'About' window will show you the application's name, version, and copyright information.

The 'About' window will show you the application's name, version, and copyright information.

The 'About' window will show you the application's name, version, and copyright information.

SCM database manual: This can be used when SC/SCPM database updates might be needed for the database. In other words, SC/SCPM updates are done on the database in a server or in the cloud instead of being done on separate host's database.

Determine HLT specifications: Download HLT package and be installed.

WHO laboratory manual: All the analytical methods with SC/SCPM database and HLT.

7.3.2. Prerequisites

The purpose of this document is to provide information on the prerequisites for the installation of the SC/SCPM database and HLT.

7.3.2.1. Prerequisites

7.3.2.1.1. OS/DBMS system

OS/DBMS system: Windows 10/11 or Linux Ubuntu 20.04

OS/DBMS system: Windows 10/11 or Linux Ubuntu 20.04

OS/DBMS system: Windows 10/11 or Linux Ubuntu 20.04

OS/DBMS system: Windows 10/11 or Linux Ubuntu 20.04

OS/DBMS system: Windows 10/11 or Linux Ubuntu 20.04

OS/DBMS system: Windows 10/11 or Linux Ubuntu 20.04

OS/DBMS system: Windows 10/11 or Linux Ubuntu 20.04

OS/DBMS system: Windows 10/11 or Linux Ubuntu 20.04

7.3.3. Installation

The purpose of this document is to provide information on the prerequisites for the installation of the SC/SCPM database and HLT.

The purpose of this document is to provide information on the prerequisites for the installation of the SC/SCPM database and HLT.

7.3.3.1. Prerequisites

7.3.4: Send feedback

[View an add comment about customer experience for virtual care history.](#)

7.3.5: my5CA web

[F515516/515516/515516/515516](#)

7.3.6: Meeting Room

[F515516/515516/515516/515516](#)

7.3.7: Remote Support

[F515516/515516/515516/515516](#)

8 Maintenance

8.1 Overview

SCA SCOPÉ is a closed system that can be used for maintenance work on all SCOPÉ units, with the exception of gas solenoid. The hardware is SCOPÉ compatible and is available at scop@scop.com.

8.2 Maintenance settings

SCOPÉ TA

8.3 Clean the equipment

8.3.1 Clean the surface of the equipment

1. Turn the equipment off and disconnect it from the power.

2. Wipe down the surface of the equipment with a clean, damp cloth.

 **WARNING** Do not use harsh cleaning agents or solvents on the equipment. Use only mild soap and water.

8.3.2 Clean the internal components

1. Turn the equipment off and disconnect it from the power.

3. If it is necessary to remove the steps to clean thoroughly, remove the front cover of the stage.
3. Disconnect the top metal stage ring between the center and the bottom guide to the right side of the site.
4. Clean again with soft cloth, using small amount of alcohol. Wash the equipment with soft cloth in alcohol.



Warning: Do not use rubbing pads, alcohol, acetone, or "bleach" for cleaning. Use of such materials will damage the microscope. Do not use any oil or grease. Also, please do not spray any cleaning solution.



WARNING: Do not touch the lens with your fingers.



Warning: Do not touch the stage with your hand.



Warning: Please do not clean with alcohol, acetone, benzene, and acetone.

0.00: Electron Microscope

Electron microscope is a type of microscope that uses a beam of electrons to create an image of a specimen. It is used to study the structure of materials at the atomic level. The image is formed by the interaction of the electron beam with the specimen, which produces secondary electrons that are collected and amplified to form a visible image.

Alternately, a cleaning solution (mixure of 1 part chlorine bleach to 10 parts water) can be used to clean the fiberglass gel.

1. Mold the new cleaning rags with the cleaning solution, wring out the liquid in circular motion from top to bottom.
2. Wipe with dry rags or new cleaning paper.



Warning: Never clean lenses with alcohol, acetone, gasoline, kerosene, benzene, turpentine, mineral spirits, or any other flammable liquid.



Warning: The liquid cleaning solution can be highly corrosive to the lens. Do not use on any lens.

⚠️ Equipment Maintenance

⚠️ Change Filter

Always change the filter and replace the air filter in the hood when the number of particles per cubic centimeter is greater than 100,000.

⚠️ Change Clean Room Filter

Change the clean room filter when the number of particles is greater than 100,000.



Warning: The clean room filter is highly flammable. Do not use in the clean room.

8.5 Prepare SCA SCOPE for transport

Before using the adapter and antenna, it is necessary to connect the SCA SCOPE to the computer. Before using the SCA SCOPE, please read the SCA SCOPE user manual, which also needs to be done for the next step.

1. Go to maintenance setting.



2. Turn the SCA SCOPE on (press the power button on the back).

MACHINE GUIDE

① Turn the SCA SCOPE on (press the power button on the back).

② Turn on the SCA SCOPE by pressing the power button on the back.



Fig. 4.08. Reinstall the drive

- 4 Press the drive motor tight (Fig. 4.09) and check that the drive motor is correctly installed. The drive motor is secured with the screws shown in Fig. 4.09.



Image 1000000111 Macintosh folder



Seats of different size are used, as different sized legs provided with the seatbelts will be required to install.

7. Install the first sitting restraint strap in the front passenger leg. Pull the strap taut, and be careful that one end is the right colour from the other. (See note on page 124).



Figure 10: Front passenger leg

8. Check the front restraint strap is at the correct level. The strap should be 100mm (4 inches) above the child's head. (See note on page 124).



Figure 39. Hydraulic cylinder with a cooling system.

16. **QUESTION** How do you know if the cylinder is leaking? How do you know if it is leaking?



Figure 40. Hydraulic cylinder with a cooling system.

17. **QUESTION** How do you know if the cylinder is leaking?

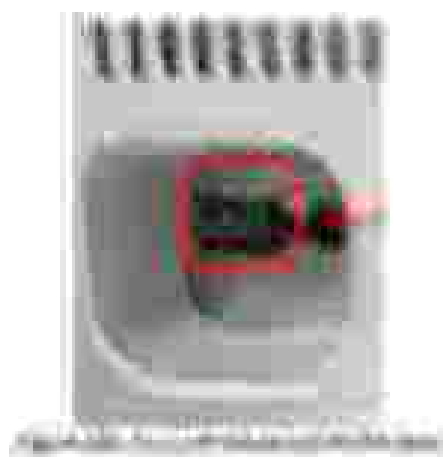
Step 4

Look through the eyepiece and observe the specimen. What do you see? Draw a diagram of what you see.

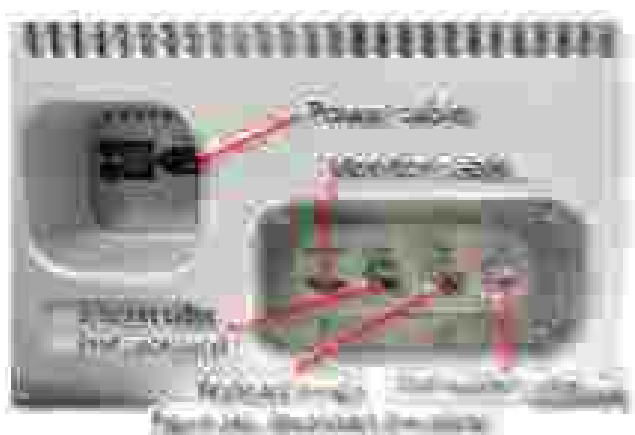


Fig. 1.10: A simple microscope

Activity 2: Making a simple microscope



12. Disconnect the cover, the monitor and the USB controller.



13. Place the main board on the back of the monitor and connect the power cable to the USB controller.



54. Cross the transportation box.



1. [Click here](#) to see the correct answer.